



KR 22 R1610



Technical data

| | |
|--|--|
| Maximum reach | 1612 mm |
| Maximum payload | 27 kg |
| Rated payload | 22 kg |
| Rated supplementary load, rotating column / link arm / arm | 0 kg / 0 kg / 10 kg |
| Pose repeatability (ISO 9283) | ± 0.04 mm |
| Number of axes | 6 |
| Mounting position | Floor; Ceiling; Wall; Desired angle |
| Footprint | 430.5 mm x 370 mm |
| Weight | approx. 245 kg |

Axis data

| | |
|--------------------------|----------------|
| Motion range | |
| A1 | ±185 ° |
| A2 | -185 ° / 65 ° |
| A3 | -138 ° / 175 ° |
| A4 | ±350 ° |
| A5 | ±130 ° |
| A6 | ±350 ° |
| Speed with rated payload | |
| A1 | 200 °/s |
| A2 | 175 °/s |
| A3 | 190 °/s |
| A4 | 430 °/s |
| A5 | 430 °/s |
| A6 | 630 °/s |

Operating conditions

| | |
|--------------------------------------|--------------------------------|
| Ambient temperature during operation | 5 °C to 45 °C (278 K to 318 K) |
|--------------------------------------|--------------------------------|

Protection rating

| | |
|--|------|
| Protection rating (IEC 60529) | IP65 |
| Protection rating, in-line wrist (IEC 60529) | IP65 |

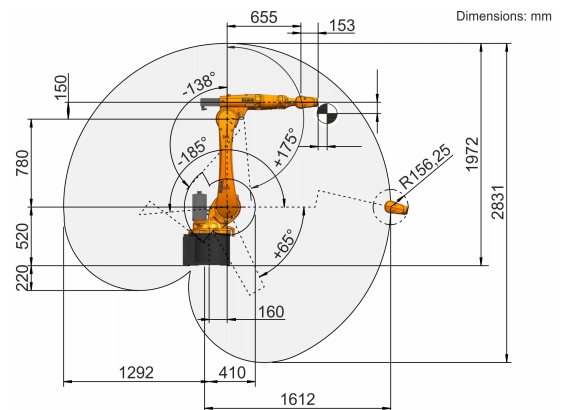
Controller

| | |
|------------|-------|
| Controller | KR C4 |
|------------|-------|

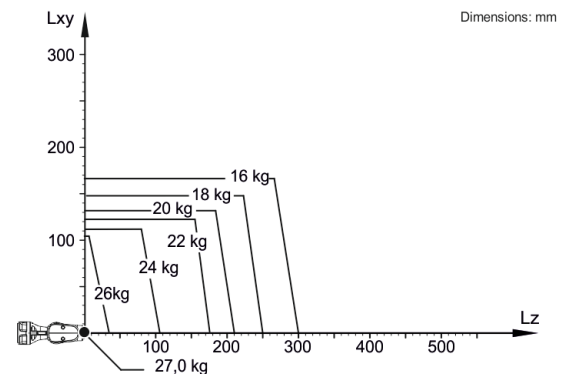
Teach pendant

| | |
|---------------|---------------|
| Teach pendant | KUKA smartPAD |
|---------------|---------------|

Workspace graphic



Payload diagram



The KR 22 R1610 is designed for a rated payload of 22 kg in order to optimize the dynamic performance of the robot. With reduced load center distances, higher loads up to the maximum payload may be used. The specific load case must be verified using KUKA.Load. For further consultation, please contact KUKA Support.

Mounting flange

