

Hand lever valve (4/3 4/2 way)

4HV、4HVL Series

Specification

Model	4HV2□□ -06(L)	4HV2□□ -08(L)	4HV3□□ -08(L)	4HV3□□ -10(L)	4HV4□□ -15(L)	4HV4□□ -20(L)
Fluid	Air (to be filtered by 40 μ m filter element)					
Operating	Manual control direct acting type					
Port size ①	1/8"	1/4"	1/4"	3/8"	1/2"	3/4"
Orifice size	14.0mm ² (Cv=0.78)	16.0mm ² (Cv=0.89)	30.0mm ² (Cv=1.67)	33.0mm ² (Cv=1.83)	88.0mm ² (Cv=4.89)	95.0mm ² (Cv=5.27)
Valve type	4 port 2 position		4 port 3 position			
Lubrication	Not required					
Pressure range	0 ~ 1.0MPa(0~145Psi)					
Proof pressure	1.5 MPa(215Psi)					
Temperature $^{\circ}$ C	-20~70					
Operating angle	90 $^{\circ}$					

① PT thread, NPT thread and G thread are available.

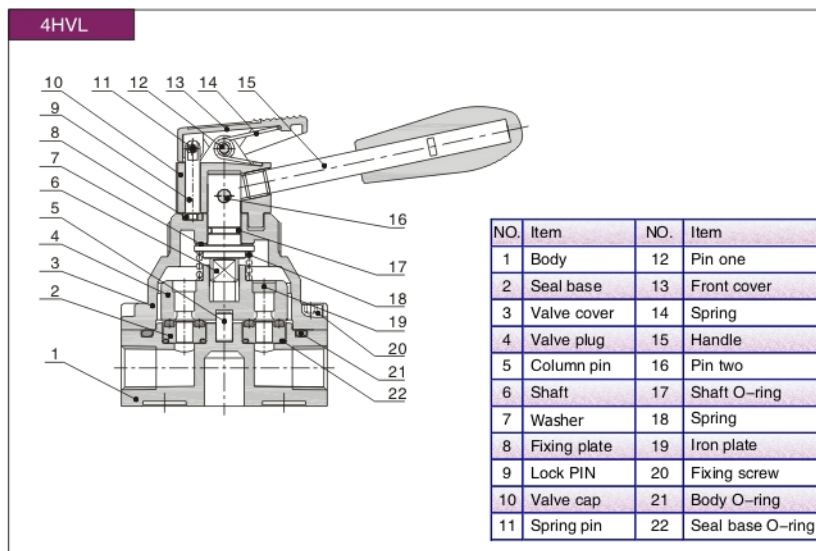
Ordering code

4HV	2	30	—	06	—	S	—	L	—	P
Model	Code	Post size		Note		Installation		Thread type		
4HV: Hand lever valve	2: 2 Series 3: 3 Series 4: 4 Series	06: 1/8" 08: 1/4" 10: 3/8" 15: 1/2" 20: 3/4"		Blank: Without lock L: With lock		Blank: Body installation S: Panel installation ②		P: PT T: NPT G: G		
		Valve type								
		10: 4 port 2 position 30: 4 port 3 position①								

① 4 port 3 position only has closed center type;

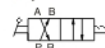
② The panel installation can be attached with installing nut.

Inner structure



Symbol

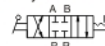
4/2 way



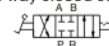
4/2 way with lock



4/3 way closed center



4/3 way closed center type with lock

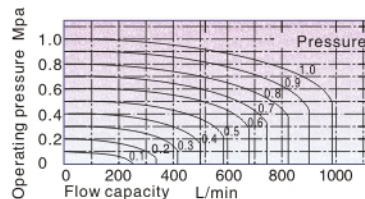


Product feature

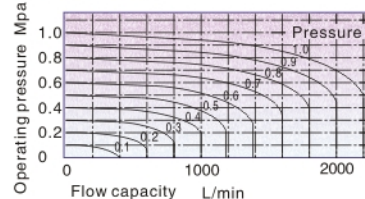
1. 4/3-way hand-lever valve has three central functions for your choice;
2. The direction-change turns lightly with good hand feeling and exact orientation;
3. Large effective circulating area leads to little pressure loss;
4. Panel and body installation are optional. The panel installation can be attached with installing nut.

Flow chart

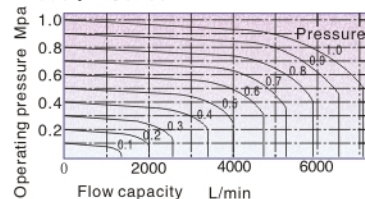
Model: 2 Series



Model: 3 Series



Model: 4 Series



Hand lever valve (4/3 4/2 way)

4HV、4HVL Series

■ Dimensions

