



WANSHSIN®

萬鑫精工

打造純德國技術的中國機電品牌



WANSHSIN®

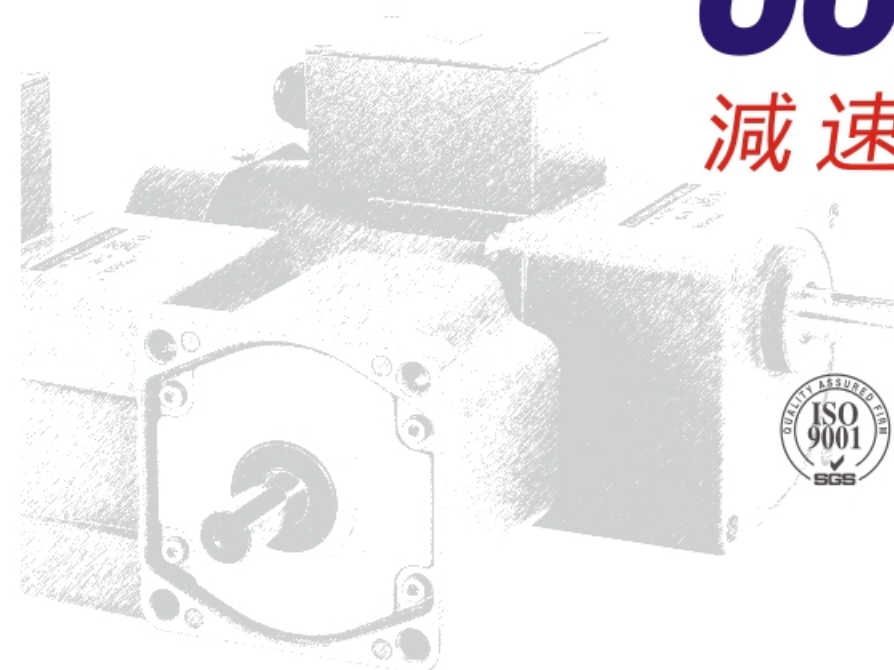
萬鑫精工

打造純德國技術的中國機電品牌

Product Reducers

CONTENTS

減速機產品目錄



經銷商
Distributor

Create Chinese Electromechanical Products Brand
From The Professional Germany Technology

SCIENCE AND TECHNOLOGY FROM GERMANY FOCUS ON THE WORLD POWER

源自德國科技 專註世界動力

萬鑫精工(湖南)有限公司(以下簡稱:萬鑫精工)是一家集產品研發、生產銷售、市場運營於一體的高精密減速機的集團化公司。旗下在廣東和山東擁有兩家全資子公司。

萬鑫精工九十年代初始建於臺灣,源自於德國技術,為滿足國內市場的快速增長以及“WANSHSIN”品牌未來在大陸市場的競爭力,於2009年毅然將總部從臺灣整廠遷移至廣東東莞,並重新布局走“精鑫”強國之路,得益於公司團隊多年的共同努力,“WANSHSIN”品牌在市場上迅速崛起並得到客戶的一致好評,為了更好的服務國內客戶和應對國際化戰略布局,公司先後於2012年成立山東分公司,並在2014年將總部從廣東東莞遷移至中國中部核心城市湖南長沙,建立高標準現代化產業園,總部命名為:萬鑫精工(湖南)有限公司,順利實現戰略產業基地轉移。總部佔地面積7萬平方米,總投資達3億元人民幣。

萬鑫精工兼具德國先進科技與臺灣精巧細緻的特色:精於心,簡於形。始終堅持德國機電尖端研發技術,秉承德國細致考究的生產工藝,與德國多家研究室達成戰略合作關係,不斷加強與國際、國內同行的交流,吸收先進的設計思想,利用領先的設計軟件開發研究新產品,實現產品結構更新換代的優化和升級。同時,萬鑫精工借鑒臺灣機電品牌的簡約化、人性化的設計風格,體積更小外觀更精緻,性能更加強勁。

萬鑫精工高薪聘請曾在德國知名企業從事設計研發工作的核心技術人才和掌握最精湛製造工藝的德國技術顧問;生產團隊成員均擁有十年以上的機電行業從業經驗。從研發到生產,嚴格執行國際標準,節能環保理念貫穿每個環節,祇為將產品品質做到極致。

萬鑫精工對市場需求的精準把握根植於與數以百計的中小企業和研究機構的密切聯繫,讓中小企業參與尖端技術領域研究,促進研發

和科技成果轉化成真正的生產力,從市場角度研發產品所以更懂企業需求,同時可為靈活多變的客戶提供定制化產品,滿足不同行業的工藝需求,創造非凡價值。

精益求精的品質苛求,世界一流的創新技術,成就了萬鑫精工在機電行業的領導者地位,萬鑫精工立足中國輻射全球,產品覆蓋中國市場全區域,並遠銷東南亞各地,贏得市場一直好評。萬鑫精工成為企業節能減排產業升級的得力助手!

萬鑫精工自始至終重視現有產品的質量和行業所需求新產品的研發,引進國際業界多名頂尖技術工程師加盟,促使萬鑫精工能夠一直致力於世界自動化產業的發展,為推動科技智能化社會的進步而不懈努力,秉持“勇擔責任、追求卓越、引領創新”的企業精神,打造純正德國技術的中國機電品牌!



WANSHSIN (Hunan) Co., Ltd. (hereinafter referred to as: WANSHSIN) is a large group integrating R&D, production and sales of high-precision reducer, and has two wholly-owned subsidiaries located in Guangdong and Shandong.

WANSHSIN, originated from the professional Germany technology, was established in Taiwan in 1990s. We resolutely removed our headquarters from Taiwan to Dongguan, Guangdong in 2009, so as to meet the rapid growth of the domestic market and the great competition in mainland market of “WANSHSIN” brand in future, and then we rearranged a pursuit of the “Precision WANSHSIN” road to a powerful nation. Due to the joint efforts of the company team for many years, “WANSHSIN” brand rapidly rises in the market and gets the consistent high praises from the customers. In order to offer better service for the domestic clients and the internationalization strategic layout, the company established a subsidiary in Shandong in 2014, and transferred his headquarters from Dongguan, Guangdong to Changsha city in Hunan province, the core city in central China in 2014, and constructed high-standard modern industrial park named as WANSHSIN (Hunan) Co., Ltd. which successfully realized the strategy and industrial base transference. The headquarters covers an area of 70,000 square meters with a total investment of 300 million RMB.

WANSHSIN integrates advanced technologies of Germany and exquisite and delicate characteristics of Taiwan: sense and simplicity. We always adhere to the electrical and mechanical cutting-edge technologies of

Germany, elegant and meticulous production process and establish strategic cooperation partnership with a number of German research laboratories, strengthen exchanges with international and domestic counterparts, learn advanced design concepts, and use leading design software to develop new products, optimize and upgrade the product structure. At the same time, WANSHSIN learns the simple and humanized design of electromechanical brands from Taiwan, featuring smaller size, more refined appearance and more robust performance.

WANSHSIN offers high salary to hire core technology talents engaged in design and R&D work in well-known companies in Germany and German technology consultants having the most exquisite manufacturing processes; the members of production team have more than a decade of experience in the electromechanical industry. Implement international standards strictly from R&D to production, and run through the energy saving ideas in every aspect to achieve the ultimate product quality.

The accurate grasp of market demand of WANSHSIN is rooted in close contact with hundreds of small and medium enterprises and research institutions, let SMEs participate in cutting-edge technology research, promote the transformation of R&D and technological achievements into real productivity, develop products from the market point of view, so that WANSHSIN knows business needs better, and also can provide customized products for customers to meet the technology needs of different industries and create extraordinary values.

Rigorous quality requirement and world-class innovation contribute to the leading position of WANSHSIN in electromechanical industry. WANSHSIN is based in China and covers the world. The products cover the entire market of China and are exported to Southeast Asia, and have won unanimous acclaim. WANSHSIN has become a favorite assistant in energy saving and industry upgrading!

WANSHSIN attaches great importance to the quality of existing products and new products research and development the industry required from the beginning to end, and brings in many top technical engineers in international industry, making WANSHSIN committed to the development of world automation industry and unremitting efforts to promote the progress of science intelligent society, keeps the industrial spirit of “Assuming responsibility, pursuing excellence and committed to innovation”, and builds Chinese mechanical and electrical brand with professional Germany technology!

VISION

萬鑫願景

打造純德國技術的中國機電品牌。

Create chinese electromechanical products brand
from the Professional germany technology

MISSION

萬鑫使命

為客戶提供高效率、低能耗的全套動力解決方案。

To provide clients with a full set of power solutions of higher efficiency
and lower energy consumption.

為員工提供更好工作環境，更大發展平臺；

To provide employees with a better working environment
and bigger platform for development.

為社會和諧發展貢獻力量。

To make contributions to the harmonious development of the society.

SERVICE POLICY

萬鑫服務方針

真誠溝通，高效處理，優質服務，顧客滿意。

Sincere communication,
Efficient handling,
Perfect services,
Customer satisfaction.

累累碩果
見證萬鑫榮耀

ROYAL GLORY WITNESS
WITNESS ROYAL GLORY



微型減速機 MICRO GEAR REDUCERS



06-53

- | | |
|---|---|
| <p>07 訂購方式 DESIGNATION
微型交流電機 Micro AC motor
微型直流電機 Micro DC motor</p> <p>09 通用參數 GENERAL PARAMETERS
微型交流電機接線圖及運行電容外形尺寸
Micro AC motor wiring diagram dimensions and running capacitor dimensions
微型直流電機接線圖
Micro DC motor wiring diagram dimensions</p> <p>10 微型交流電機 MICRO AC MOTOR</p> <p>10 6W
各型號電機性能 Motor performance
減速箱減速比性能對照表
Reduction ratio performance chart
外形尺寸 (CAD) Dimensions</p> <p>12 15W
各型號電機性能 Motor performance
減速箱減速比性能對照表
Reduction ratio performance chart
外形尺寸 (CAD) Dimensions</p> <p>14 25W
各型號電機性能 Motor performance
減速箱減速比性能對照表
Reduction ratio performance chart
外形尺寸 (CAD) Dimensions</p> <p>19 40W/60W
各型號電機性能 Motor performance
減速箱減速比性能對照表
Reduction ratio performance chart
外形尺寸 (CAD) Dimensions</p> <p>23 90W/120W
各型號電機性能 Motor performance
減速箱減速比性能對照表
Reduction ratio performance chart
外形尺寸 (CAD) Dimensions</p> <p>28 140W/200W
各型號電機性能 Motor performance
減速箱減速比性能對照表
Reduction ratio performance chart
外形尺寸 (CAD) Dimensions</p> <p>31 調速器
SPEED GOVERNOR</p> | <p>35 微型直流電機 MICRO DC MOTOR</p> <p>35 60DC
各型號電機性能 Motor performance
減速箱減速比性能對照表
Reduction ratio performance chart
外形尺寸 (CAD) Dimensions</p> <p>36 70DC
各型號電機性能 Motor performance
減速箱減速比性能對照表
Reduction ratio performance chart
外形尺寸 (CAD) Dimensions</p> <p>38 80DC
各型號電機性能 Motor performance
減速箱減速比性能對照表
Reduction ratio performance chart
外形尺寸 (CAD) Dimensions</p> <p>41 90DC
各型號電機性能 Motor performance
減速箱減速比性能對照表
Reduction ratio performance chart
外形尺寸 (CAD) Dimensions</p> <p>48 100DC
各型號電機性能 Motor performance
減速箱減速比性能對照表
Reduction ratio performance chart
外形尺寸 (CAD) Dimensions</p> <p>50 帶接線盒減速電機選購指南
TERMINAL BOX DIRECTION</p> <p>51 技術應用 (說明及安裝)
TECHNICAL APPLICATION
(Description and installation)</p> |
|---|---|

中型減速機 MEDIUM GEAR REDUCERS



55-77

- 55 訂購方式 DESIGNATION
馬達規範 Motor specification
輸出扭矩表 Output torque
- 58 減速機之選定範例 THE SELECTED REDUCER EXAMPLES
連結方式 Wiring diagram
單相馬達/剎車器結線方式 Single phase motor w/brake unit diagram
- 60 尺寸表 DIMENSIONS
- 1、立式三相標準IEC鋁殼 (剎車) 馬達
Vertical three-phase standard IEC aluminum(brake) motor
 - 2、GH臥式三相、單相鋁殼 (剎車) 齒輪減速馬達
GH horizontal single-phase three-phase, aluminum shell(brake) gear reducer motors
 - 3、GV立式附三相、單相鋁殼 (剎車) 齒輪減速馬達
GV Vertical with single-phase three-phase, vertical aluminum shell(brake) gear reducer motors
 - 4、GH臥式高速比附三相、單相鋁殼 (剎車) 齒輪減速馬達
GH horizontal high-speed ratio single-phase three-phase, aluminum shell(brake) gear reducer motors
 - 5、GV立式高速比附三相、單相鋁殼 (剎車) 齒輪減速馬達
GV All cinemas vertical high-speed ratio single-phase three-phase, aluminum shell(brake) gear reducer motors
 - 6、GH臥式附三相、單相鋁殼 (剎車) 縮框型齒輪減速馬達
GH horizontal with single-phase three-phase, aluminum shell(brake) shrink box type gear reducer motors
 - 7、GV立式附三相、單相鋁殼 (剎車) 縮框型齒輪減速馬達
GV Vertical with single-phase three-phase, vertical aluminum shell(brake) shrinkable gear box reducer motors
 - 8、GH臥式高速比附三相、單相鋁殼 (剎車) 縮框型齒輪減速馬達
GH horizontal high-speed ratio single-phase three-phase, aluminum shell(brake) shrinkable gear box reducer motors
 - 9、GV立式高速比附三相、單相鋁殼 (剎車) 縮框型齒輪減速馬達
GV All cinemas vertical high-speed ratio single-phase three-phase, aluminum shell(brake) shrinkable gear box reducer motors
 - 10、GHM臥式直結型齒輪減速機
GHM horizontal straight gear box
 - 11、GVM立式直結型齒輪減速機
GVM vertical straight gear box
 - 12、GHD臥式雙軸型齒輪減速機
GHD horizontal type dual axle gear box
 - 13、GVD立式雙軸型齒輪減速機
GVD(gnu visual debugger)biaxial vertical gear box
- 71 零件剖面圖 DETAILS PARTS LIST
- 74 故障排除 TROUBLE SHOUTING
- 76 齒輪減速馬達使用說明書
INSTRUCTIONS FOR GEAR REDUCER MOTOR

MICRO GEAR REDUCERS

微型减速机



订购方式

DESIGNATION

微型交流电机 MICRO AC MOTOR

微型交流电机命名 MICRO AC MOTOR MODEL NAME

60YS06WG/DV22□

1 2 3 4 5 6

1 机座号 Stand Code	2 名称代号 Name Code	4 转子轴形式代号 Rotor shaft form Code	5 电压代号 Voltage Code	6 派生代号 Derived Code
60、70、80、90、100	YS: 标准电机 STANDARD MOTOR YT: 调速电机 VARIABLE SPEED MOTOR YB: 电磁制动电机 ELECTROMAGNETIC BRAKE MOTOR YF: 调速电磁制动电机 VARIABLE SPEED ELECTROMAGNETIC BRAKE MOTOR YR: 阻尼电机 DAMPING MOTOR	G: 齿轴 GEAR SHAFT D: 圆轴 ROUND SHAFT	V11: 单相 SINGLE PHASE 110V V22: 单相 SINGLE PHASE 220V Y22: 三相 THREE PHASE 220V Y38: 三相 THREE PHASE 380V	X: 引线式 (线长 300MM) LEAD (LINE LENGTH 300 MM) T: 带热保护器 WITH THERMAL PROTECTOR H: 带接线盒 WITH TERMINAL BLOCK
3 功率代号 Power Code				
06W、15W、25W、40W、60W、90W、120W、140W、200W				

减速箱型号命名 GEARBOX MODEL NAME

60GK100H□

1 2 3 4 5

1 机座号 Stand Code	2 机型代号 Model Code	3 减速比代号 Reduction ratio Code	4 结构代号 Structure Code	5 派生代号 Derived Code
60、70、80、90、100、L80、L90、L100	GK: 6-25W 减速箱 GEARBOX GF: 40-200W 减速箱 GEARBOX	3、3.6... 200	H: 标准 STANDARD HE: 带耳型 EARED RT: 直角中实 RIGHT ANGLE SOLID RC: 直角中空 RIGHT ANGLE HOLLOW	K: 通孔 HOLE

微型交流电机通用技术标准 MICRO AC MOTOR COMMON TECHNICAL STANDARDS

绝缘电阻	在常温，常温下电机额定运转后，以DC500V兆欧表测量组与外壳的绝缘电阻应为100MΩ以上。
绝缘耐压	在常温，常温下电机额定运转后，在绕组与外壳间施加50Hz或60Hz，1.5KV电压一分钟，无异常。
温升	在装上减速箱或同等散热板进行额定运转时，以电阻法测定其绕组温度上升值为75K以下。
绝缘等级	B级 (130°C)
过热保护装置	可内藏过热保护装置 (自动复位型) 动作温度: 120°C±5°C 复位温度: 82°C±15°C (此功能需定)
使用环境温度	-10°C~+40°C (无冻结)
使用环境湿度	85% 以下 (无结露)

INSULATION RESISTANCE: After running at rated settings under normal temperature and humidity, the insulation resistance between the winding and the shell of the motor measured with a DC500V megger should be more than 100MΩ.

INSULATION VOLTAGE: After running at rated settings under normal temperature and humidity, apply 50Hz or 60Hz, 1.5KV between the winding and the shell for one minute, and the motor is normal.

TEMPERATURE RISE: When running at rated settings with gearbox or equivalent heat radiating plate installed, the temperature rise of the winding measured in resistance method is 75K or less.

INSULATION CLASS: B (130°C)

OVERHEATING PROTECTION DEVICE: With built-in thermal protection device (automatic reset type); operating temperature: 120±5°C; reset temperature: 82±15°C (this feature should be customized)

微型直流电机 MICRO DC MOTOR

■ 微型直流电机命名 MICRO DC MOTOR MODEL NAME

60DC20GV24R16

1 机座号 Stand Code 60, 70, 80, 90, 100	3 功率代号 Power Code 10W, 15W, 20W, 30W, 40W, 60W, 65W, 70W, 100W, 120W, 200W, 300W	5 电压代号 Voltage Code V12, V24, V90, V180	7 派生代号 Derived Code X: 引线式(线长300MM) LEAD (LINE LENGTH 300 MM)
2 DC直流电机系列 DC motor series DC	4 转子轴形式代号 Rotor shaft form Code G: 齿轮轴 GEAR SHAFT D: 圆轴 ROUND SHAFT	6 转速 Speed R16: 1600r/min R18: 1800r/min	

■ 微型直流电机通用技术标准 MICRO DC MOTOR COMMON TECHNICAL STANDARDS

绝缘电阻	在常温常湿下, 运转电机后, 以DC500V的绝缘电阻来测量的金属线圈和电机外壳之间的绝缘电阻时, 不小于100兆欧。
绝缘电压	在常温, 常湿下, 运转电机后, 在电机的金属线圈和电机外壳之间, 以1500V、50/60Hz, 施压1分钟时没有任何问题。
温升	运转电机后, 用电阻法来测量时, 线圈组温度的上升数值在80°C以下。
绝缘等级	B级 (130°C)
使用温度	-10°C~+40°C(冰冻)
使用湿度	85%以下(没有结露的场所)

INSULATION RESISTANCE: After running under normal temperature and humidity, the insulation resistance between the metal coil and the shell of the motor measured with a DC500V megger should be more than 100MΩ.

INSULATION VOLTAGE: After running under normal temperature and humidity, apply 1500V, 50/60Hz between the metal coil and the shell for one minute, and the motor is normal.

TEMPERATURE RISE: After running the motor, the temperature rise of the coil winding measured in resistance method is 80°C or less.


INSULATION CLASS: B (130°C)

OPERATING TEMPERATURE: -10~40°C (no freezing)

通用参数

GENERAL PARAMETERS

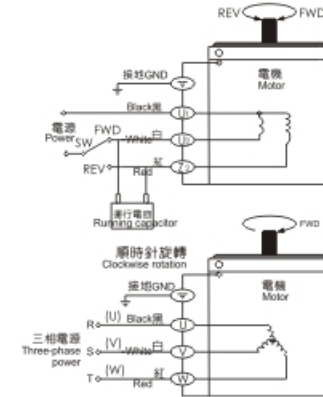
■ 微型交流电机接线图及运行电容外形尺寸 MICRO AC MOTOR WIRING DIAGRAM DIMENSIONS AND RUNNING CAPACITOR DIMENSIONS



齿轮轴
GEAR SHAFT

圆轴
ROUND SHAFT

接线图
Wiring diagram dimensions



● **顺时针旋转 CLOCKWISE ROTATION**
将开关(SW)切换至FWD侧, 则电机做顺时针旋转。
Turn the switch (SW) to FWD and the motor rotates clockwise.

● **逆时针旋转 COUNTERCLOCKWISE ROTATION**
将开关(SW)切换至REV侧, 则电机做逆时针旋转;
若兑换U、V、W中任意两条, 则电机做逆时针旋转。
Turn the switch (SW) to REV and the motor rotates counterclockwise; If any two of U, V and W are exchanged,

注意 NOTE

- 旋转方向是指面对电机输出端, 顺时针旋转为FWD, 逆时针旋转为REV。
- 单相电机旋转方向的切换作业应在电机停止后进行。
- 切换旋转方向时, 须等电机完全停止后进行, 否则将可能无法

*Rotation direction is facing the motor output terminal. The clockwise direction is FWD, and the counterclockwise direction is REV.
*The rotation direction of single phase motor should be switched when the motor is stopped.
*Switch the rotation direction only when the motor has stopped, or else it

运行电容(单相电机附件)外形尺寸
Running capacitor (single phase motor accessories) dimensions

型号 MODEL	电容/电压 CAPACITANCE VOLTAGE	外形尺寸 DIMENSIONS		
		W	T	H
6W	0.8μf/450V	37	11	25
	2.5μf/250V	37	16	30
15W	1.5μf/450V	37	11	25
	4μf/250V	47	18	35
25W	2μf/450V	37	16	30
	6μf/250V	47	20	37
40W	3μf/450V	48	20	31
	10μf/250V	59	27	38
60W	4μf/450V	48	20	32
	14μf/250V	58	28	50
90W	5μf/450V	47	20	37
	20μf/250V	59	30	50
120W	6μf/450V	47	20	37
	24μf/250V	59	30	50
140W	8μf/450V	47	23	41
	28μf/250V	60	30	50
200W	10μf/450V	59	27	38
	32μf/250V	70	40	55

■ 微型直流电机接线图 MICRO DC MOTOR WIRING DIAGRAM DIMENSIONS



齿轮轴
GEAR SHAFT

圆轴
ROUND SHAFT

接线图 Wiring diagram dimensions



• 电机给引线长度为300mm • The length of motor lead is about 300mm

微型交流电机

MICRO AC MOTOR

6W

□60×60mm

各型号电机性能 MOTOR PERFORMANCE

型号 MODEL	最大输出 功率(W) MAXIMUM OUTPUT POWER	电压V VOLTAGE	频率Hz FREQUENCY	电流A CURRENT	调速范围 r/min SPEED RANGE	起动转矩 N·mm START TORQUE	额定转矩(N·mm) RATED TORQUE		运行电容 RUNNING CAPACITOR
							1200r/min	90r/min	
齿轮轴 GEAR 60YS06GV11 SHAFT 60YR06GV11 60YT06GV11 60YB06GV11	6	Single phase 单相	50Hz	0.23	90-1300	38	47	30	2.5μf/250V
圆轴 ROUND 60YS06DV11 SHAFT 60YR06DV11 60YT06DV11 60YB06DV11									
齿轮轴 GEAR 60YS06GV22 SHAFT 60YR06GV22 60YT06GV22 60YB06GV22	6	Single phase 单相	50Hz	0.11	90-1300	38	47	32	0.8μf/450V
圆轴 ROUND 60YS06DV22 SHAFT 60YR06DV22 60YT06DV22 60YB06DV22									

•虽然调速电机的调速范围为：50Hz...90~1300r/min；60Hz...90~1600r/min。但由于低速时(<400r/min)，电机转矩下降较多，易发生过载，且电机直连风扇冷却效果差，易发热，因此必须预留足够的功率余量，并且不要经常工作在低速区。因此电机最佳调速范围为：50Hz...400~1300r/min；60Hz...400~1600r/min。

•在断开电源的同时，电机将瞬间停止并保持负载。

•Although the speed range of the motor is 50Hz, 90~1300r/min, 60Hz, 90~1600r/min, it easily causes overload and the cooling effect of the motor fan is poor if the speed is too low (<400r/min) and the motor torque decreases too much; therefore, please keep sufficient power margin and avoid operating in low speed section frequently. The optimal speed range of the motor is 50Hz, 400~1300r/min, 60Hz, 400~1600r/min.

•When the power is cut off, the motor will stop immediately and hold the load.

减速箱减速比性能对照表 REDUCTION RATIO PERFORMANCE CHART

减速比 REDUCTION RATIO	3	3.6	5	6	7.5	10	12.5	15	18	20	25	30
50Hz 最高转速r/min Output bearing speed	433	361	260	217	173	130	104	87	72	65	52	43
额定转矩N·m Rated torque	0.13	0.15	0.22	0.26	0.33	0.44	0.55	0.66	0.79	0.88	1.10	1.32
60Hz 最高转速r/min Output bearing speed	533	444	320	267	213	160	128	107	89	80	64	53
额定转矩N·m Rated torque	0.11	0.13	0.18	0.22	0.28	0.37	0.46	0.55	0.66	0.73	0.92	1.10
减速比 REDUCTION RATIO	36	40	50	60	75	90	100	120	150	180	200	
50Hz 最高转速r/min Output bearing speed	36	33	26	22	17	14	13	11	9	7	7	
额定转矩N·m Rated torque	1.59	1.76	2.06	2.18	2.42	3	3	3	3	3	3	
60Hz 最高转速r/min Output bearing speed	44	40	32	27	21	18	16	13	11	9	8	
额定转矩N·m Rated torque	1.33	1.47	1.71	1.82	2.02	2.42	2.65	3	3	3	3	

•表中转速是以电机的平均转速(50Hz:1300r/min、60Hz:1600r/min)为基数除以减速比而算出的数值。

•The speed in the table is the value of average motor speed (50Hz: 1300r/min, 60Hz: 1600r/min) divided by the reduction ratio.

•The actual speed changes according to the load (±8%).



标准减速箱
STANDARD GEARBOX
60GK □H

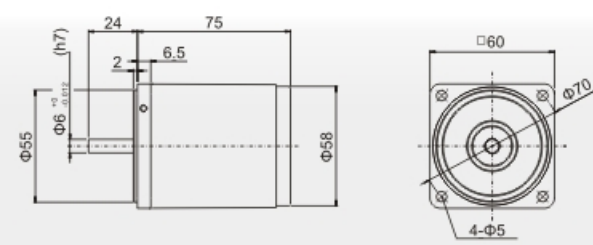
减速箱型号中的□
为减速比的数值
速比：1:3~200
□ in gearbox model
indicates the reduction
ratio (1:3~200)

外形尺寸 (CAD) DIMENSIONS

6YS/YR01

圆轴电机 质量：0.8kg

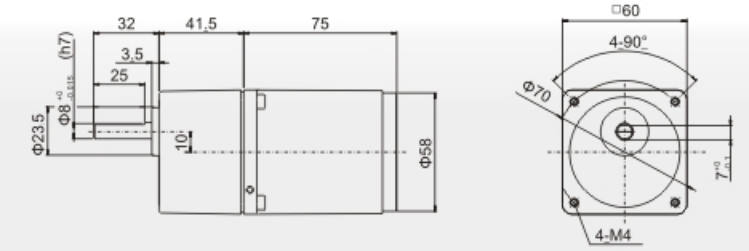
Round-axis motor, mass: 0.8kg



6YS/YR02

组合：电机+标准减速机(减速比：1:3~200)质量：1.1kg

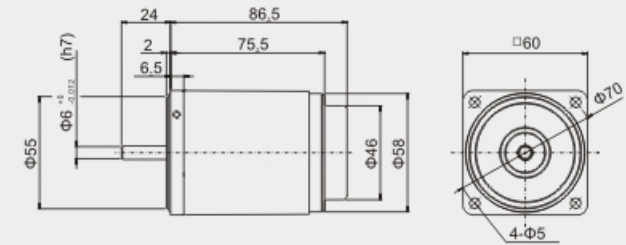
Portfolio: motor + standard reducer (reduction ratio: 1:3~200) mass: 1.1kg



6YT01

圆轴电机 质量：0.9kg

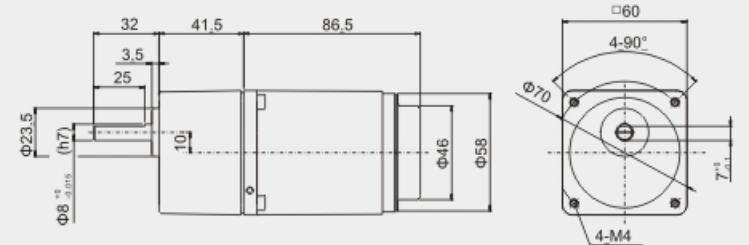
Round-axis motor, mass: 0.9kg



6YT02

组合：电机+标准减速机(减速比：1:3~200)质量：1.1kg

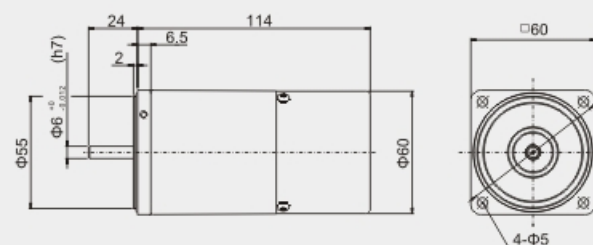
Portfolio: motor + standard reducer (reduction ratio: 1:3~200) mass: 1.1kg



6YB01

圆轴电机 质量：1.2kg

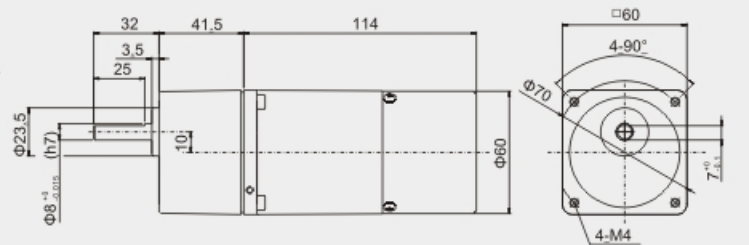
Round-axis motor, mass: 1.2kg



6YB02

组合：电机+标准减速机(减速比：1:3~200)质量：1.5kg

Portfolio: motor + standard reducer (reduction ratio: 1:3~200) mass: 1.5kg



15W

□70×70mm

各型号电机性能 MOTOR PERFORMANCE

型号 MODEL	最大输出 功率(W) MAXIMUM OUTPUT POWER	电压V VOLTAGE	频率Hz FREQUENCY	电流A CURRENT	调速范围 r/min SPEED RANGE	启动转矩 N·mm START TORQUE	额定转矩(N·mm) RATED TORQUE		运行电容 RUNNING CAPACITOR
							1200r/min	90r/min	
齿轮轴 GEAR SHAFT 70YS15GV11 70YR15GV11 70YT15GV11 70YB15GV11	15	Single phase 单相	50Hz	0.39	90-1300	70	125	45	4μf/250V
圆轴 ROUND SHAFT 70YS15DV11 70YR15DV11 70YT15DV11 70YB15DV11									
齿轮轴 GEAR SHAFT 70YS15GV22 70YR15GV22 70YT15GV22 70YB15GV22	15	Single phase 单相	50Hz	0.20	90-1300	70	125	40	1.5μf/450V
圆轴 ROUND SHAFT 70YS15DV22 70YR15DV22 70YT15DV22 70YB15DV22									

•虽然调速电机的调速范围为：50Hz...90~1300r/min；60Hz...90~1600r/min。但由于低速时(<400r/min)，电机转矩下降较多，易发生过载，且电机直连风扇冷却效果差，易发热，因此必须预留足够的功率余量，并且不要经常工作在低速区。因此电机最佳调速范围为：50Hz...400~1300r/min；60Hz...400~1600r/min。

•在断开电源的同时，电机将瞬间停止并保持负载。

•Although the speed range of the motor is 50Hz, 90~1300r/min, 60Hz, 90~1600r/min, it easily causes overload and the cooling effect of the motor fan is poor if the speed is too low (<400r/min) and the motor torque decreases too much; therefore, please keep sufficient power margin and avoid operating in low speed section frequently. The optimal speed range of the motor is 50Hz, 400~1300r/min, 60Hz, 400~1600r/min.

•When the power is cut off, the motor will stop immediately and hold the load.

减速箱减速比性能对照表 REDUCTION RATIO PERFORMANCE CHART

减速比 REDUCTION RATIO	3	3.6	5	6	7.5	10	12.5	15	18	20	25	30
50Hz 最高转速r/min Output bearing speed	433	361	260	217	173	130	104	87	72	65	52	43
额定转矩N·m Rated torque	0.30	0.36	0.50	0.60	0.74	0.99	1.24	1.49	1.79	1.98	2.31	2.78
60Hz 最高转速r/min Output bearing speed	533	444	320	267	213	160	128	107	89	80	64	53
额定转矩N·m Rated torque	0.25	0.30	0.41	0.50	0.62	0.83	1.03	1.24	1.49	1.65	1.93	2.31
减速比 REDUCTION RATIO	36	40	50	60	75	90	100	120	150	180	200	
50Hz 最高转速r/min Output bearing speed	36	33	26	22	17	14	13	11	9	7	7	
额定转矩N·m Rated torque	3.33	3.70	4.63	5	5	5	5	5	5	5	5	
60Hz 最高转速r/min Output bearing speed	44	40	32	27	21	18	16	13	11	9	8	
额定转矩N·m Rated torque	2.78	3.09	3.86	4.35	5	5	5	5	5	5	5	

•表中转速是以电机的平均转速(50Hz:1300r/min、60Hz:1600r/min)为基数除以减速比而算出的数值。

•The speed in the table is the value of average motor speed (50Hz: 1300r/min, 60Hz: 1600r/min) divided by the reduction ratio.

•The actual speed changes according to the load (±8%).



标准减速箱
STANDARD GEARBOX
70GK □H

减速箱型号中的□为减速比的数值
速比：1:3~200

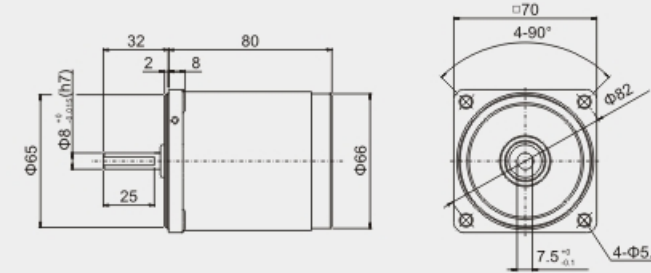
□ in gearbox model indicates the reduction ratio (1:3~200)

外形尺寸 (CAD) DIMENSIONS

15YS/YR01

圆轴电机 质量：1.1kg

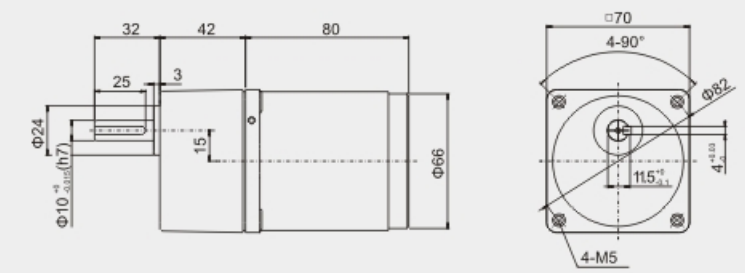
Round-axis motor, mass: 1.1kg



15YS/YR02

组合：电机+标准减速机(减速比：1:3~200)质量：1.6kg

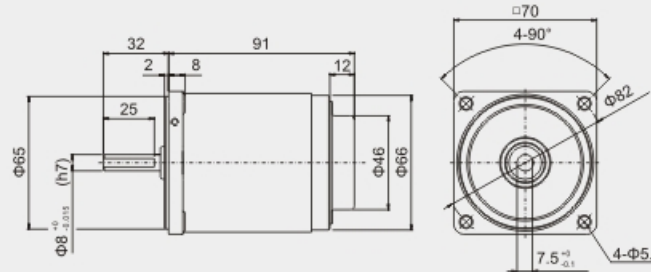
Portfolio: motor + standard reducer(reduction ratio:1:3~200)mass:1.6kg



15YT01

圆轴电机 质量：0.9kg

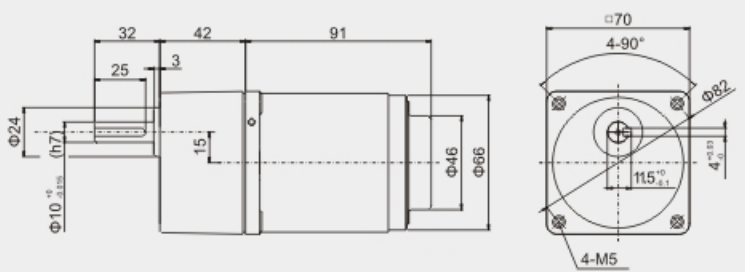
Round-axis motor, mass: 0.9kg



15YT02

组合：电机+标准减速机(减速比：1:3~200)质量：1.2kg

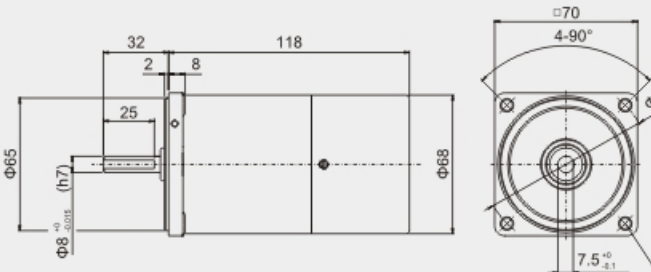
Portfolio: motor + standard reducer(reduction ratio: 1:3~200)mass:1.2kg



15YB01

圆轴电机 质量：1.1kg

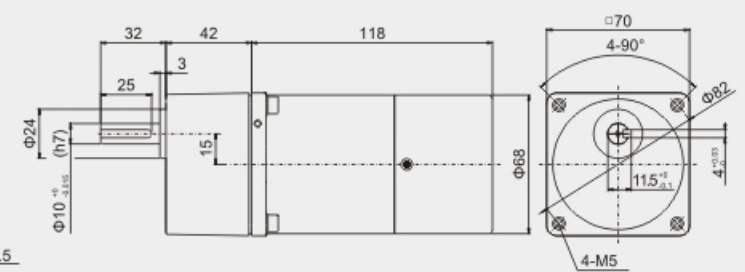
Round-axis motor, mass: 1.1kg



15YB02

组合：电机+标准减速机(减速比：1:3~200)质量：2kg

Portfolio: motor + standard reducer(reduction ratio: 1:3~200)mass: 2kg



25W

□80×80mm

各型号电机性能 MOTOR PERFORMANCE

型号 MODEL	最大输出 功率(W) MAXIMUM OUTPUT POWER	电压V	频率Hz	电流A	调速范围 r/min SPEED RANGE	启动转矩 N·mm START TORQUE	额定转矩(N·mm) RATED TORQUE		运行电容 RUNNING CAPACITOR
							1200r/min	90r/min	
齿轮轴 GEAR SHAFT 80YS25GV11 80YR25GV11 80YT25GV11 80YB25GV11	25	Single phase 单相	50Hz	0.53	90-1300	145	170	45	6μf/250V
圆轴 ROUND SHAFT 80YS25DV11 80YR25DV11 80YT25DV11 80YB25DV11			60Hz	0.48	90-1600	120	170	45	
齿轮轴 GEAR SHAFT 80YS25GV22 80YR25GV22 80YT25GV22 80YB25GV22	25	Single phase 单相	50Hz	0.25	90-1300	145	205	50	2μf/450V
圆轴 ROUND SHAFT 80YS25DV22 80YR25DV22 80YT25DV22 80YB25DV22			60Hz	0.23	90-1600	120	205	50	
齿轮轴 GEAR SHAFT 80YS25GY22 80YR25GY22 80YT25GY22 80YB25GY22	25	Three phase 三相	50Hz	0.25	90-1300	250	195		
圆轴 ROUND SHAFT 80YS25DY22 80YR25DY22 80YT25DY22 80YB25DY22			60Hz	0.23	90-1600	205	160		
齿轮轴 GEAR SHAFT 80YS25GY38 80YR25GY38 80YT25GY38 80YB25GY38	25	Three phase 三相	50Hz	0.14	90-1300	250	195		
圆轴 ROUND SHAFT 80YS25DY38 80YR25DY38 80YT25DY38 80YB25DY38			60Hz	0.13	90-1600	205	160		

•虽然调速电机的调速范围为：50Hz...90~1300r/min；60Hz...90~1600r/min。但由于低速时(<400r/min)，电机转矩下降较多，易发生过载，且电机直连风扇冷却效果差，易发热，因此必须预留足够的功率余量，并且不要经常工作在低速区。因此电机最佳调速范围为：50Hz...400~1300r/min；60Hz...400~1600r/min。

•在断开电源的同时，电机将瞬间停止并保持负载。

•Although the speed range of the motor is 50Hz, 90~1300r/min, 60Hz, 90~1600r/min, it easily causes overload and the cooling effect of the motor fan is poor if the speed is too low (<400r/min) and the motor torque decreases too much; therefore, please keep sufficient power margin and avoid operating in low speed section frequently. The optimal speed range of the motor is 50Hz, 400~1300r/min, 60Hz, 400~1600r/min.

•When the power is cut off, the motor will stop immediately and hold the load.

减速箱减速比性能对照表 REDUCTION RATIO PERFORMANCE CHART

减速比 REDUCTION RATIO	3	3.6	5	6	7.5	10	12.5	15	18	20	25	30
50Hz 最高转速r/min Output bearing speed	433	361	260	217	173	130	104	87	72	65	52	43
额定转矩N·m Rated torque	0.50	0.60	0.83	0.99	1.24	1.65	1.95	2.34	2.81	3.12	3.90	4.68
60Hz 最高转速r/min Output bearing speed	533	444	320	267	213	160	128	107	89	80	64	53
额定转矩N·m Rated torque	0.41	0.50	0.69	0.83	1.03	1.38	1.63	1.95	2.34	2.60	3.25	3.90
减速比 REDUCTION RATIO	36	40	50	60	75	90	100	120	150	180	200	
50Hz 最高转速r/min Output bearing speed	36	33	26	22	17	14	13	11	9	7	7	
额定转矩N·m Rated torque	5.62	6.24	6.89	8	8	8	8	8	8	8	8	
60Hz 最高转速r/min Output bearing speed	44	40	32	27	21	18	16	13	11	9	8	
额定转矩N·m Rated torque	4.68	5.20	5.74	6.88	8	8	8	8	8	8	8	

•表中转速是以电机的平均转速(50Hz:1300r/min、60Hz:1600r/min)为基数除以减速比而算出的数值。

•The speed in the table is the value of average motor speed (50Hz: 1300r/min, 60Hz: 1600r/min) divided by the reduction ratio.

•The actual speed changes according to the load (±8%).



标准减速箱
STANDARD GEARBOX
80GK □H



直角中空减速箱
RIGHT ANGLE HOLLOW GEARBOX
L80GK □RC



直角中实减速箱
RIGHT ANGLE SOLID GEARBOX
L80GK □RT

减速箱型号中的□为减速比的数值

速比：1:3~200

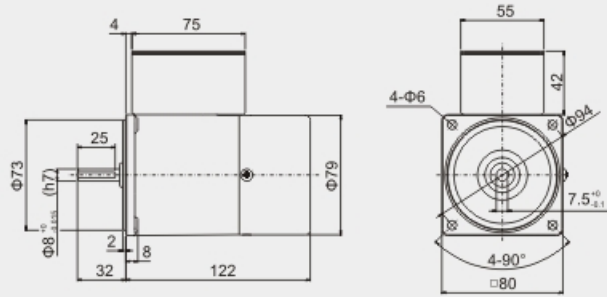
□ in gearbox model indicates the reduction ratio (1:3~200)

外形尺寸 (CAD) DIMENSIONS

25YB01

圆轴电机 质量: 2kg

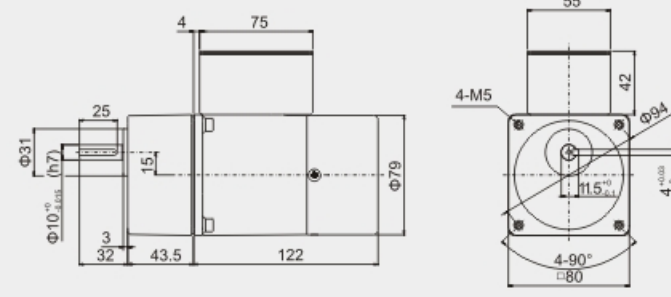
Round-axis motor, mass: 2kg



25YB02

组合: 电机+标准减速箱(减速比: 1:3~200)质量: 2.7kg

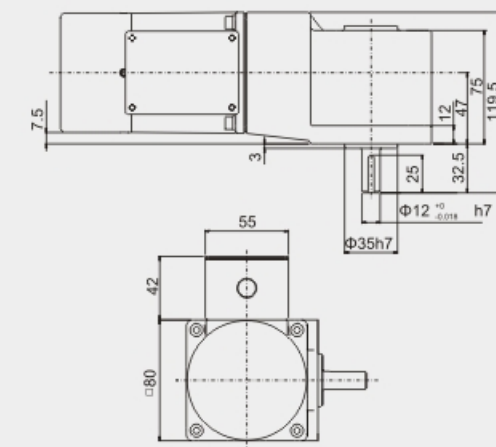
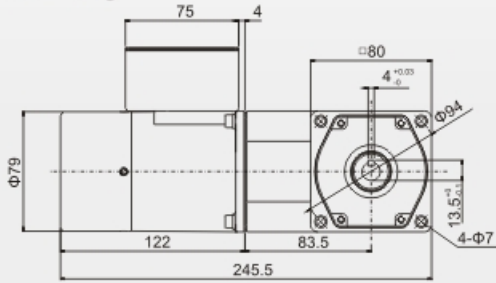
Portfolio: motor + standard reducer(reduction ratio: 1:3~200)mass: 2.7kg



25YB03

组合: 电机+直角中空减速箱(减速比: 1:3~200)质量: 3.8kg

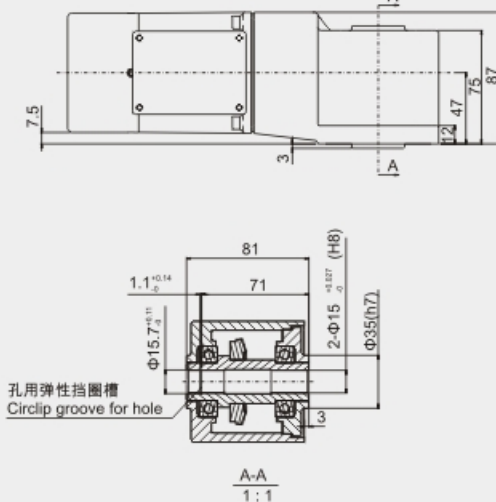
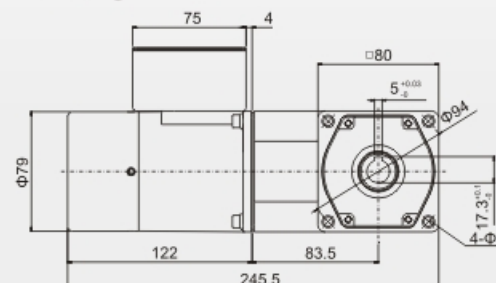
Portfolio: motor + right angle solid gearbox (reduction ratio: 1:3~200) mass: 3.8kg



25YB04

组合: 电机+直角中空减速箱(减速比: 1:3~200)质量: 3.7kg

Portfolio: motor + right-angle hollow gearbox (reduction ratio: 1:3~200) mass: 3.7kg



各型号电机性能 MOTOR PERFORMANCE

型号 MODEL	最大输出 功率(W) MAXIMUM OUTPUT POWER	电压V VOLTAGE	频率Hz FREQUENCY	电流A CURRENT	调速范围 r/min SPEED RANGE	启动转矩 N·mm START TORQUE	额定转矩(N·mm) RATED TORQUE		运行电容 RUNNING CAPACITOR				
							1200r/min	90r/min					
齿轮轴 GEAR SHFT	90YS40GV11 90YR40GV11 90YT40GV11 90YF40GV11	40	Single phase 单相 110	50Hz	0.79	90-1300	235	300	65	10 μ f/250V			
圆轴 ROUND SHFT	90YS40DV11 90YR40DV11 90YT40DV11 90YF40DV11			60Hz	0.71	90-1600	180	260	70				
齿轮轴 GEAR SHFT	90YS40GV22 90YR40GV22 90YT40GV22 90YF40GV22			40	Single phase 单相 220	50Hz	0.40	90-1300	235		320	65	3 μ f/450V
圆轴 ROUND SHFT	90YS40DV22 90YR40DV22 90YT40DV22 90YF40DV22					60Hz	0.37	90-1600	180		260	70	
齿轮轴 GEAR SHFT	90YS40GY22 90YB40GY22	40	Three phase 三相 220			50Hz	0.35	90-1300	403	310			
圆轴 ROUND SHFT	90YS40DY22 90YB40DY22					60Hz	0.32	90-1600	338	260			
齿轮轴 GEAR SHFT	90YS40GY38 90YB40GY38	40	Three phase 三相 380	50Hz	0.21	90-1300	403	310					
圆轴 ROUND SHFT	90YS40DY38 90YB40DY38			60Hz	0.19	90-1600	338	260					

*虽然调速电机的调速范围为: 50Hz...90~1300r/min; 60Hz...90~1600r/min。但由于低速时(<400r/min), 电机转矩下降较多, 易发生过载, 且电机直连风扇冷却效果差, 易发热, 因此必须预留足够的功率余量, 并且不要经常工作在低速区。因此电机最佳调速范围为: 50Hz...400~1300r/min; 60Hz...400~1600r/min。

*在断开电源的同时, 电机瞬间停止关保持负载。

*Although the speed range of the motor is 50Hz, 90~1300r/min, 60Hz, 90~1600r/min, it easily causes overload and the cooling effect of the motor fan is poor if the speed is too low (<400r/min) and the motor torque decreases too much; therefore, please keep sufficient power margin and avoid operating in low speed section frequently. The optimal speed range of the motor is 50Hz, 400~1300r/min, 60Hz, 400~1600r/min.

*When the power is cut off, the motor will stop immediately and hold the load.

40W
60W

□90×90mm

各型号电机性能 MOTOR PERFORMANCE

型号 MODEL	最大输出 功率(W) MAXIMUM OUTPUT POWER	电压V VOLTAGE	频率Hz FREQUENCY	电流A CURRENT	调速范围 r/min SPEED RANGE	启动转矩 N·mm START TORQUE	额定转矩(N·mm) RATED TORQUE		运行电容 RUNNING CAPACITOR	
							1200r/min	90r/min		
齿轮轴 GEAR SHAFT	90YS60GV11 90YR60GV11 90YT60GV11 90YF60GV11 90YB60GV11	60	Single phase 单相 110	50Hz	1.26	90-1300	350	490	200	14μf/250V
圆轴 ROUND SHAFT	90YS60DV11 90YR60DV11 90YT60DV11 90YF60DV11 90YB60DV11			60Hz	1.14	90-1600	280	490	220	
齿轮轴 GEAR SHAFT	90YS60GV22 90YR60GV22 90YT60GV22 90YF60GV22 90YB60GV22	60	Single phase 单相 220	50Hz	0.62	90-1300	350	490	200	4μf/450V
圆轴 ROUND SHAFT	90YS60DV22 90YR60DV22 90YT60DV22 90YF60DV22 90YB60DV22			60Hz	0.57	90-1600	280	490	220	
齿轮轴 GEAR SHAFT	90YS60GY22 90YB60GY22	60	Three phase 三相 220	50Hz	0.53	90-1300	600	460		
圆轴 ROUND SHAFT	90YS60DY22 90YB60DY22			60Hz	0.48	90-1600	490	375		
齿轮轴 GEAR SHAFT	90YS60GY38 90YB60GY38	60	Three phase 三相 380	50Hz	0.32	90-1300	600	460		
圆轴 ROUND SHAFT	90YS60DY38 90YB60DY38			60Hz	0.29	90-1600	490	375		

•虽然调速电机的调速范围为：50Hz...90~1300r/min；60Hz...90~1600r/min。但由于低速时(<400r/min)，电机转矩下降较多，易发生过载，且电机直连风扇冷却效果差，易发热，因此必须预留足够的功率余量，并且不要经常工作在低速区。因此电机最佳调速范围为：50Hz...400~1300r/min；60Hz...400~1600r/min。

•在断开电源的同时，电机瞬间停止关保持负载。

•Although the speed range of the motor is 50Hz, 90~1300r/min, 60Hz, 90~1600r/min, it easily causes overload and the cooling effect of the motor fan is poor if the speed is too low (<400r/min) and the motor torque decreases too much; therefore, please keep sufficient power margin and avoid operating in low speed section frequently. The optimal speed range of the motor is 50Hz, 400~1300r/min, 60Hz, 400~1600r/min.

•When the power is cut off, the motor will stop immediately and hold the load.

减速箱减速比性能对照表 REDUCTION RATIO PERFORMANCE CHART

减速比 REDUCTION RATIO		3	3.6	5	6	7.5	10	12.5	15	18	20	25	30	
40W	50Hz	最高转速r/min Output bearing speed	433	361	260	217	173	130	104	87	72	65	52	43
		额定转矩N·m Rated torque	0.77	0.92	1.28	1.53	1.92	2.56	3.20	3.83	4.60	5.11	5.73	6.88
	60Hz	最高转速r/min Output bearing speed	533	444	320	267	213	160	128	107	89	80	64	53
		额定转矩N·m Rated torque	0.64	0.77	1.07	1.28	1.60	2.13	2.66	3.20	3.83	4.26	4.78	5.73
60W	50Hz	最高转速r/min Output bearing speed	433	361	260	217	173	130	104	87	72	65	52	43
		额定转矩N·m Rated torque	1.19	1.43	1.98	2.38	2.98	3.97	4.35	5.22	6.27	6.96	8.26	9.92
	60Hz	最高转速r/min Output bearing speed	533	444	320	267	213	160	128	107	89	80	64	53
		额定转矩N·m Rated torque	0.99	1.19	1.65	1.98	2.48	3.31	3.63	4.35	5.22	5.80	6.89	8.26
减速比 REDUCTION RATIO		36	40	50	60	75	90	100	120	150	180	200		
40W	50Hz	最高转速r/min Output bearing speed	36	33	26	22	17	14	13	11	9	7	7	
		额定转矩N·m Rated torque	8.25	9.17	10	10	10	10	10	10	10	10	10	
	60Hz	最高转速r/min Output bearing speed	44	40	32	27	21	18	16	13	11	9	8	
		额定转矩N·m Rated torque	6.88	7.64	9.16	10	10	10	10	10	10	10	10	
60W	50Hz	最高转速r/min Output bearing speed	36	33	26	22	17	14	13	11	9	7	7	
		额定转矩N·m Rated torque	11.90	13.22	16.53	19.83	20	20	20	20	20	20	20	
	60Hz	最高转速r/min Output bearing speed	44	40	32	27	21	18	16	13	11	9	8	
		额定转矩N·m Rated torque	9.92	11.02	13.77	16.53	20	20	20	20	20	20	20	

•表中转速是以电机的平均转速(50Hz:1300r/min、60Hz:1600r/min)为基数除以减速比而算出的数值。

•The speed in the table is the value of average motor speed (50Hz: 1300r/min, 60Hz: 1600r/min) divided by the reduction ratio.

•The actual speed changes according to the load (±8%).



标准减速箱
STANDARD GEARBOX
90GF □H



带耳减速箱
EARED GEARBOX
90GF □HE



直角中空减速箱
RIGHT ANGLE HOLLOW GEARBOX
L90GF □RC



直角中实减速箱
RIGHT ANGLE SOLID GEARBOX
L90GF □RT

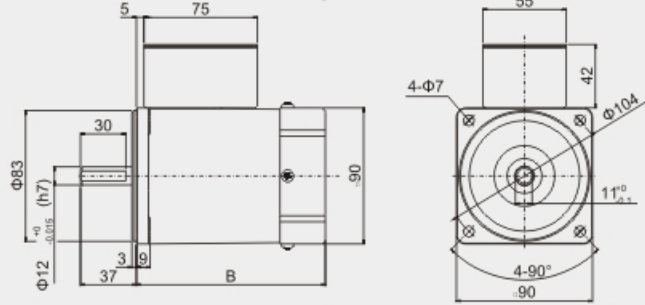
减速箱型号中的□为减速比的数值
速比：1:3~200
□ in gearbox model indicates the reduction ratio (1:3~200)

外形尺寸 (CAD) DIMENSIONS

40/60YS/YR/YT/YB/YF01

圆轴电机 质量: 2.5kg

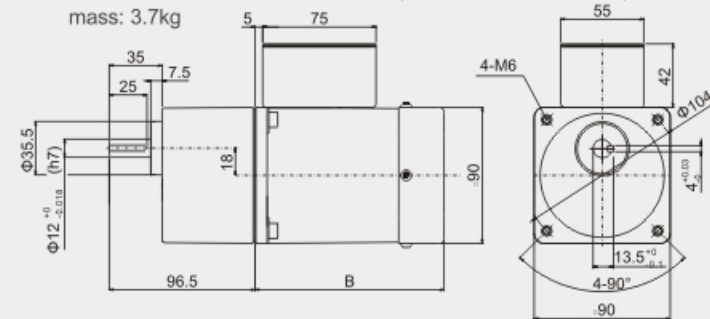
Round-axis motor, mass: 2.5kg



40/60YS/YR/YT/YB/YF02

组合: 电机+标准减速机(减速比: 1:3~200)质量: 3.7kg

Portfolio: motor + standard reducer (reduction ratio: 1:3~200)
mass: 3.7kg



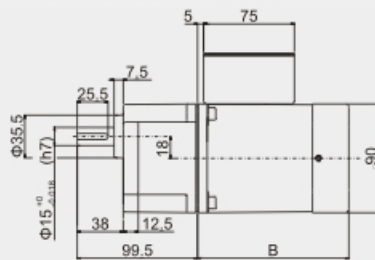
40/60YS/YR/YT/YB/YF03

组合: 电机+带耳减速机

减速比: 1:3~200

质量: 3.7kg

Portfolio: motor + eared gear
Reduction ratio: 1:3~200
Mass: 3.7kg



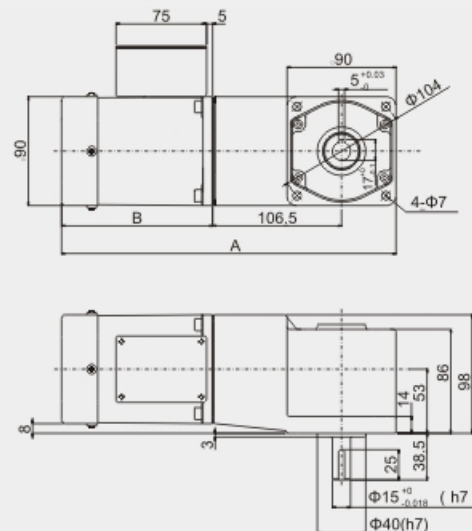
40/60YS/YR/YT/YB/YF04

组合: 电机+直角中实减速机

减速比: 1:3~200

质量: 5.4kg

Portfolio: motor + right-angle solid gearbox
Reduction ratio: 1:3~200
Mass: 5.4kg



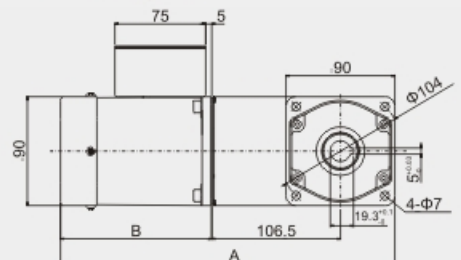
40/60YS/YR/YT/YB/YF05

组合: 电机+直角中空减速机

减速比: 1:3~200

质量: 5.3kg

Portfolio: motor + right angle hollow gearbox
Reduction ratio: 1:3~200
Mass: 5.3kg



序号 No.	电机类型 Motor type	A	B
1	YS/YR	276.5	125
2	YT	287.5	136
3	YB	311.5	160
4	YF	323.5	172



各型号电机性能 MOTOR PERFORMANCE

型号 MODEL	最大输出 功率(W) MAXIMUM OUTPUT POWER	电压V VOLTAGE	频率Hz FREQUENCY	电流A CURRENT	调速范围 r/min SPEED RANGE	启动转矩 N·mm START TORQUE	额定转矩(N·mm) RATED TORQUE		运行电容 RUNNING CAPACITOR				
							1200r/min	90r/min					
齿轮轴 GEAR SHAFT	90YS90GV11 90YR90GV11 90YT90GV11 90YB90GV11 90YF90GV11	90	Single phase 单相 110	50Hz	1.70	90-1300	525	710	200	20µf/250V			
圆轴 ROUND SHAFT	90YS90DV11 90YR90DV11 90YT90DV11 90YB90DV11 90YF90DV11			60Hz	1.50	90-1600	420	710	200				
齿轮轴 GEAR SHAFT	90YS90GV22 90YR90GV22 90YT90GV22 90YB90GV22 90YF90GV22			90	Single phase 单相 220	50Hz	0.95	90-1300	525		710	200	5µf/450V
圆轴 ROUND SHAFT	90YS90DV22 90YR90DV22 90YT90DV22 90YB90DV22 90YF90DV22					60Hz	0.86	90-1600	420		710	200	
齿轮轴 GEAR SHAFT	90YS90GY22 90YB90GY22					90	Three phase 三相 220	50Hz	0.69		90-1300	910	
圆轴 ROUND SHAFT	90YS90DY22 90YB90DY22	60Hz	0.63					90-1600	730	560			
齿轮轴 GEAR SHAFT	90YS90GY38 90YB90GY38	90	Three phase 三相 380			50Hz	0.41	90-1300	910	700			
圆轴 ROUND SHAFT	90YS90DY38 90YB90DY38			60Hz	0.38	90-1600	730	560					

- 虽然调速电机的调速范围为: 50Hz...90~1300r/min; 60Hz...90~1600r/min。但由于低速时(<400r/min), 电机转矩下降较多, 易发生过载, 且电机直连风扇冷却效果差, 易发热, 因此必须预留足够的功率余量, 并且不要经常工作在低速区。因此电机最佳调速范围为: 50Hz...400~1300r/min; 60Hz...400~1600r/min。
- 在断开电源的同时, 电机瞬间停止关保持负载。
- Although the speed range of the motor is 50Hz, 90~1300r/min, 60Hz, 90~1600r/min, it easily causes overload and the cooling effect of the motor fan is poor if the speed is too low (<400r/min) and the motor torque decreases too much; therefore, please keep sufficient power margin and avoid operating in low speed section frequently. The optimal speed range of the motor is 50Hz, 400~1300r/min, 60Hz, 400~1600r/min.
- When the power is cut off, the motor will stop immediately and hold the load.

90W
120W

□90×90mm

各型号电机性能 MOTOR PERFORMANCE

型号 MODEL	最大输出 功率(W) MAXIMUM OUTPUT POWER	电压V VOLTAGE	频率Hz FREQUENCY	电流A CURRENT	调速范围 r/min SPEED RANGE	启动转矩 N·mm START TORQUE	额定转矩(N·mm) RATED TORQUE		运行电容 RUNNING CAPACITOR				
							1200r/min	90r/min					
齿轮轴 GEAR SHAFT	90YS120GV11 90YR120GV11 90YT120GV11 90YB120GV11	120	Single phase 单相 110	50Hz	2.04	90-1300	720	840	300	24µf/250V			
圆轴 ROUND SHAFT	90YS120DV11 90YR120DV11 90YT120DV11 90YB120DV11			60Hz	1.84	90-1600	600	840	300				
齿轮轴 GEAR SHAFT	90YS120GV22 90YR120GV22 90YT120GV22 90YB120GV22			120	Single phase 单相 220	50Hz	1.02	90-1300	720		840	300	6µf/450V
圆轴 ROUND SHAFT	90YS120DV22 90YR120DV22 90YT120DV22 90YB120DV22					60Hz	0.92	90-1600	600		840	300	
齿轮轴 GEAR SHAFT	90YS120GY22 90YB120GY22	120	Three phase 三相 220			50Hz	0.89	90-1300	1195	924			
圆轴 ROUND SHAFT	90YS120DY22 90YB120DY22					60Hz	0.81	90-1600	1014	750			
齿轮轴 GEAR SHAFT	90YS120GY38 90YB120GY38	120	Three phase 三相 380	50Hz	0.51	90-1300	1195	924					
圆轴 ROUND SHAFT	90YS120GY38 90YB120GY38			60Hz	0.45	90-1600	1014	750					

•虽然调速电机的调速范围为：50Hz...90~1300r/min；60Hz...90~1600r/min。但由于低速时(<400r/min)，电机转矩下降较多，易发生过载，且电机直连风扇冷却效果差，易发热，因此必须预留足够的功率余量，并且不要经常工作在低速区。因此电机最佳调速范围为：50Hz...400~1300r/min；60Hz...400~1600r/min。

•在断开电源的同时，电机瞬间停止关保持负载。

•Although the speed range of the motor is 50Hz, 90~1300r/min, 60Hz, 90~1600r/min, it easily causes overload and the cooling effect of the motor fan is poor if the speed is too low (<400r/min) and the motor torque decreases too much; therefore, please keep sufficient power margin and avoid operating in low speed section frequently. The optimal speed range of the motor is 50Hz, 400~1300r/min, 60Hz, 400~1600r/min.

•When the power is cut off, the motor will stop immediately and hold the load.

减速箱减速比性能对照表 REDUCTION RATIO PERFORMANCE CHART

减速比 REDUCTION RATIO		3	3.6	5	6	7.5	10	12.5	15	18	20	25	30	
90W	50Hz	最高转速r/min Output bearing speed	433	361	260	217	173	130	104	87	72	65	52	43
		额定转矩N·m Rated torque	1.79	2.14	2.98	3.57	4.46	5.29	6.61	7.93	9.52	10.58	12.07	14.48
	60Hz	最高转速r/min Output bearing speed	533	444	320	267	213	160	128	107	89	80	64	53
		额定转矩N·m Rated torque	1.49	1.79	2.48	2.98	3.72	4.41	5.51	6.61	7.93	8.82	10.06	12.07
120W	50Hz	最高转速r/min Output bearing speed	433	361	260	217	173	130	104	87	72	65	52	43
		额定转矩N·m Rated torque	2.25	2.70	3.75	4.50	5.62	6.88	8.60	10.31	12.38	13.75	15.43	18.51
	60Hz	最高转速r/min Output bearing speed	533	444	320	267	213	160	128	107	89	80	64	53
		额定转矩N·m Rated torque	1.87	2.25	3.12	3.75	4.68	5.73	7.16	8.60	10.31	11.46	12.86	15.43
减速比 REDUCTION RATIO		36	40	50	60	75	90	100	120	150	180	200		
90W	50Hz	最高转速r/min Output bearing speed	36	33	26	22	17	14	13	11	9	7	7	
		额定转矩N·m Rated torque	17.38	19.31	20	20	20	20	20	20	20	20	20	
	60Hz	最高转速r/min Output bearing speed	44	40	32	27	21	18	16	13	11	9	8	
		额定转矩N·m Rated torque	14.48	16.09	20	20	20	20	20	20	20	20	20	
120W	50Hz	最高转速r/min Output bearing speed	36	33	26	22	17	14	13	11	9	7	7	
		额定转矩N·m Rated torque	20	20	20	20	20	20	20	20	20	20	20	
	60Hz	最高转速r/min Output bearing speed	44	40	32	27	21	18	16	13	11	9	8	
		额定转矩N·m Rated torque	18.51	20	20	20	20	20	20	20	20	20	20	

•表中转速是以电机的平均转速(50Hz:1300r/min、60Hz:1600r/min)为基数除以减速比而算出的数值。

•The speed in the table is the value of average motor speed (50Hz: 1300r/min, 60Hz: 1600r/min) divided by the reduction ratio.

•The actual speed changes according to the load (±8%).



标准减速箱
STANDARD GEARBOX
90GF □H



带耳减速箱
EARED GEARBOX
90GF □HE



直角中空减速箱
RIGHT ANGLE HOLLOW GEARBOX
L90GF □RC



直角中实减速箱
RIGHT ANGLE SOLID GEARBOX
L90GF □RT

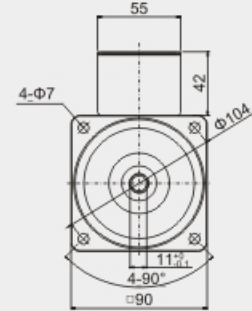
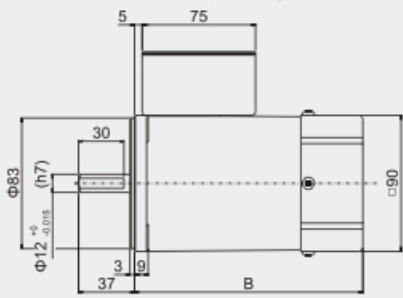
减速箱型号中的□为减速比的数值
速比：1:3~200
□ in gearbox model indicates the reduction ratio (1:3~200)

外形尺寸 (CAD) DIMENSIONS

90/120YS/YR/YT/YB/YF01

圆轴电机 质量: 3kg

Round-axis motor, mass: 3kg

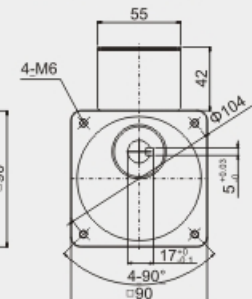
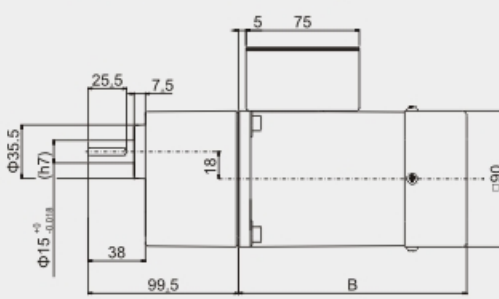


序号 No.	电机类型 Motor type	B
1	YS/YR	140
2	YT	151
3	YB	175
4	YF	187

90/120YS/YR/YT/YB/YF02

组合: 电机+标准减速箱 (减速比: 1:3~200) 质量: 4.2kg

Portfolio: motor + standard reducer (reduction ratio: 1:3~200) mass: 4.2kg

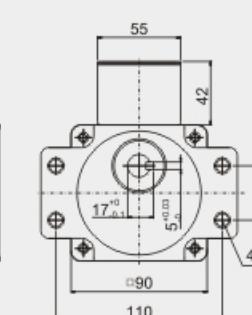
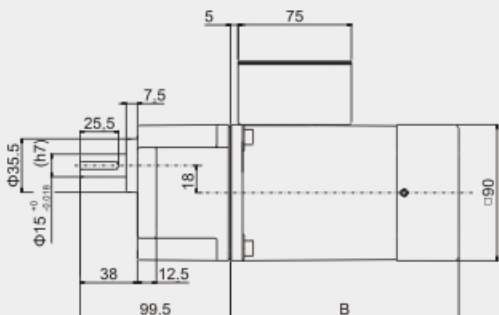


序号 No.	电机类型 Motor type	B
1	YS/YR	140
2	YT	151
3	YB	175
4	YF	187

90/120YS/YR/YT/YB/YF03

组合: 电机+带耳减速箱 (减速比: 1:3~200) 质量: 4.2kg

Portfolio: motor + eared gear (reduction ratio: 1:3~200) mass: 4.2kg



序号 No.	电机类型 Motor type	B
1	YS/YR	140
2	YT	151
3	YB	175
4	YF	187

90/120YS/YR/YT/YB/YF04

组合: 电机+直角中空减速箱

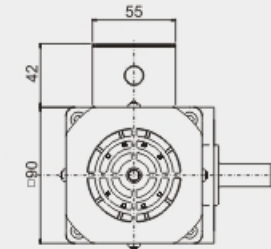
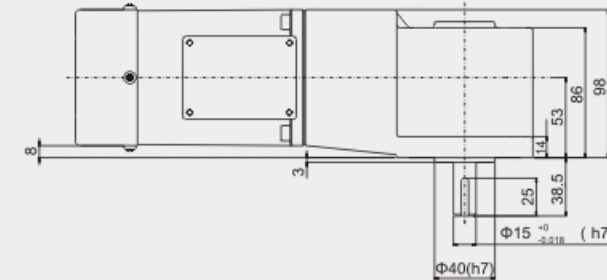
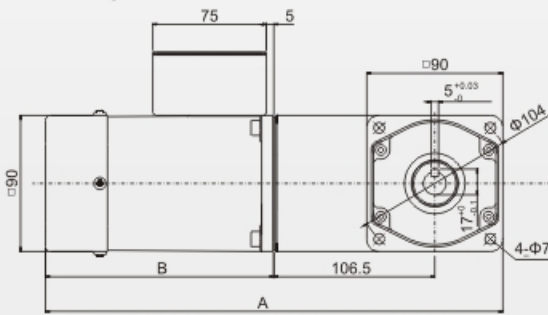
减速比: 1:3~200

质量: 6.2kg

Portfolio: motor + right-angle solid gearbox

Reduction ratio: 1:3~200

Mass: 2kg



序号 No.	电机类型 Motor type	A	B
1	YS/YR	291.5	140
2	YT	302.5	151
3	YB	326.5	175
4	YF	338.5	187

90/120YS/YR/YT/YB/YF05

组合: 电机+直角中空减速箱

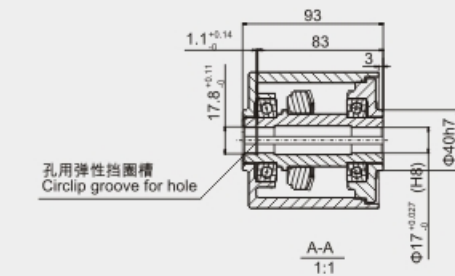
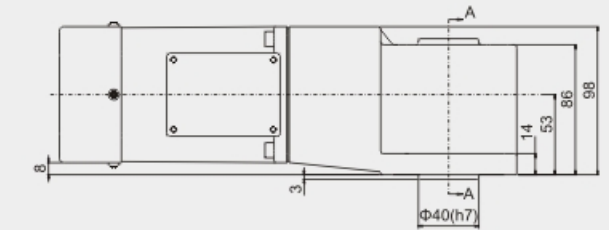
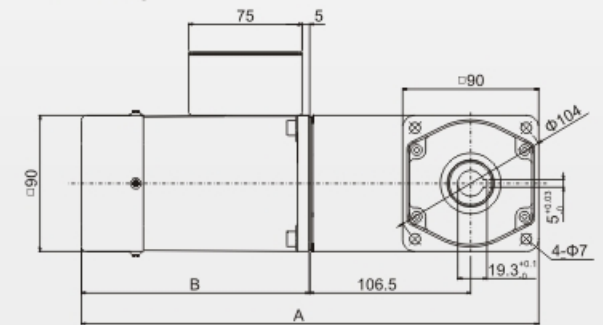
减速比: 1:3~200

质量: 6kg

Portfolio: motor + right angle hollow gearbox

Reduction ratio: 1:3~200

Mass: 2kg



140W
200W

□100×100mm

各型号电机性能 MOTOR PERFORMANCE

型号 MODEL	最大输出 功率(W) MAXIMUM OUTPUT POWER	电压V VOLTAGE	频率Hz FREQUENCY	电流A CURRENT	调速范围 r/min SPEED RANGE	起动转矩 N·mm START TORQUE	额定转矩(N·mm) RATED TORQUE		运行电容 RUNNING CAPACITOR			
							1200r/min	90r/min				
齿轮轴 GEAR SHAFT 100YS140GV11 100YT140GV11 100YB140GV11 100YF140GV11	140	Single phase 单相 110	50Hz	2.26	90-1300	840	1050	350	28μf/250V			
圆轴 ROUND SHAFT 100YS140DV11 100YT140DV11 100YB140DV11 100YF140DV11										60Hz	2.10	90-1600
齿轮轴 GEAR SHAFT 100YS140GV22 100YT140GV22 100YB140GV22 100YF140GV22			140	Single phase 单相 220	50Hz	1.13	90-1300	840				
圆轴 ROUND SHAFT 100YS140DV22 100YT140DV22 100YB140DV22 100YF140DV22										60Hz	1.05	90-1600
齿轮轴 GEAR SHAFT 100YS140GY22 100YB140GY22	140	Three phase 三相 220	50Hz	0.95	90-1300	1393	1078					
圆轴 ROUND SHAFT 100YS140DY22 100YB140DY22									60Hz	0.88	90-1600	1183
齿轮轴 GEAR SHAFT 100YS140GY38 100YB140GY38	140	Three phase 三相 380	50Hz	0.55	90-1300	1393	1078					
圆轴 ROUND SHAFT 100YS140DY38 100YB140DY38									60Hz	0.48	90-1600	1183
齿轮轴 GEAR SHAFT 100YS200GV11 100YT200GV11 100YB200GV11 100YF200GV11	200	Single phase 单相 110	50Hz	3.38	90-1300	1150	1650	32μf/250V				
圆轴 ROUND SHAFT 100YS200DV11 100YT200DV11 100YB200DV11 100YF200DV11									60Hz	3.08	90-1600	930
齿轮轴 GEAR SHAFT 100YS200GV22 100YT200GV22 100YB200GV22 100YF200GV22			200	Single phase 单相 220	50Hz	1.69	90-1300					
圆轴 ROUND SHAFT 100YS200DV22 100YT200DV22 100YB200DV22 100YF200DV22									60Hz	1.54	90-1600	930
齿轮轴 GEAR SHAFT 100YS200GY22 100YB200GY22	200	Three phase 三相 220	50Hz	1.82	90-1300	1990	1540					
圆轴 ROUND SHAFT 100YS200DY22 100YB200DY22									60Hz	1.64	90-1600	1690
齿轮轴 GEAR SHAFT 100YS200GY38 100YB200GY38	200	Three phase 三相 380	50Hz	1.05	90-1300	1990	1540					
圆轴 ROUND SHAFT 100YS200DY38 100YB200DY38									60Hz	0.95	90-1600	1690

•虽然调速电机的调速范围为：50Hz...90~1300r/min；60Hz...90~1600r/min。但由于低速时(<400r/min)，电机转矩下降较多，易发生过载，且电机直连风扇冷却效果差，易发热，因此必须预留足够的功率余量，并且不要经常工作在低速区。因此电机最佳调速范围为：50Hz...400~1300r/min；60Hz...400~1600r/min。
•在断开电源的同时，电机将瞬间停止并保持负载。

•Although the speed range of the motor is 50Hz, 90~1300r/min, 60Hz, 90~1600r/min, it easily causes overload and the cooling effect of the motor fan is poor if the speed is too low (<400r/min) and the motor torque decreases too much; therefore, please keep sufficient power margin and avoid operating in low speed section frequently. The optimal speed range of the motor is 50Hz, 400~1300r/min, 60Hz, 400~1600r/min.
•When the power is cut off, the motor will stop immediately and hold the load.

减速箱减速比性能对照表 REDUCTION RATIO PERFORMANCE CHART

减速比 REDUCTION RATIO		3	3.6	5	6	7.5	10	12.5	15	18	20	25	30	
140W 50Hz	最高转速r/min Output bearing speed	433	361	260	217	173	130	104	87	72	65	52	43	
	额定转矩N·m Rated torque	2.62	3.15	4.37	5.25	6.56	7.51	9.38	11.26	13.51	15.02	18.77	21.91	
	60Hz	最高转速r/min Output bearing speed	533	444	320	267	213	160	128	107	89	80	64	53
		额定转矩N·m Rated torque	2.19	2.62	3.64	4.37	5.46	6.26	7.82	9.38	11.26	12.51	15.64	18.26
200W 50Hz	最高转速r/min Output bearing speed	433	361	260	217	173	130	104	87	72	65	52	43	
	额定转矩N·m Rated torque	3.44	4.13	5.73	6.88	8.60	11.46	14.33	17.19	18.51	20.57	25.71	30.85	
	60Hz	最高转速r/min Output bearing speed	533	444	320	267	213	160	128	107	89	80	64	53
		额定转矩N·m Rated torque	2.87	3.44	4.78	5.73	7.16	9.55	11.94	14.33	15.43	17.14	21.43	25.71
减速比 REDUCTION RATIO		36	40	50	60	75	90	100	120	150	180	200		
140W 50Hz	最高转速r/min Output bearing speed	36	33	26	22	17	14	13	11	9	7	7		
	额定转矩N·m Rated torque	26.29	29.21	33.94	40.73	44	44	44	44	44	44	44		
	60Hz	最高转速r/min Output bearing speed	44	40	32	27	21	18	16	13	11	9	8	
		额定转矩N·m Rated torque	21.91	24.34	28.28	33.94	40.73	44	44	44	44	44	44	
200W 50Hz	最高转速r/min Output bearing speed	36	33	26	22	17	14	13	11	9	7	7		
	额定转矩N·m Rated torque	37.02	41.14	44	44	44	44	44	44	44	44	44		
	60Hz	最高转速r/min Output bearing speed	44	40	32	27	21	18	16	13	11	9	8	
		额定转矩N·m Rated torque	30.85	34.28	42.85	44	44	44	44	44	44	44	44	

*表中转速是以电机的平均转速(50Hz:1300r/min、60Hz:1600r/min)为基数除以减速比而算出的数值。

*The speed in the table is the value of average motor speed (50Hz: 1300r/min, 60Hz: 1600r/min) divided by the reduction ratio.

*The actual speed changes according to the load (±8%).



标准减速箱
STANDARD GEARBOX
100GF □H



直角中空减速箱
RIGHT ANGLE HOLLOW GEARBOX
L100GF □RC



直角中实减速箱
RIGHT ANGLE SOLID GEARBOX
L100GF □RT

减速箱型号中的□为减速比的数值

速比：1:3~200

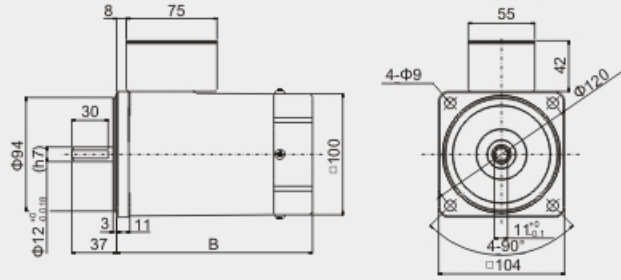
□ in gearbox model indicates the reduction ratio (1:3~200)

外形尺寸 (CAD) DIMENSIONS

140/200YS/YT/YB/YF01

圆轴电机 质量: 4.6kg

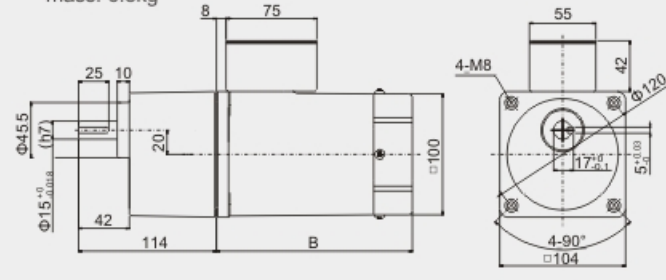
Round-axis motor, mass: 4.6kg



140/200YS/YT/YB/YF02

组合: 电机+标准减速箱(减速比: 1:3~200)质量: 6.8kg

Portfolio: motor + standard reducer (reduction ratio: 1:3~200)
mass: 6.8kg



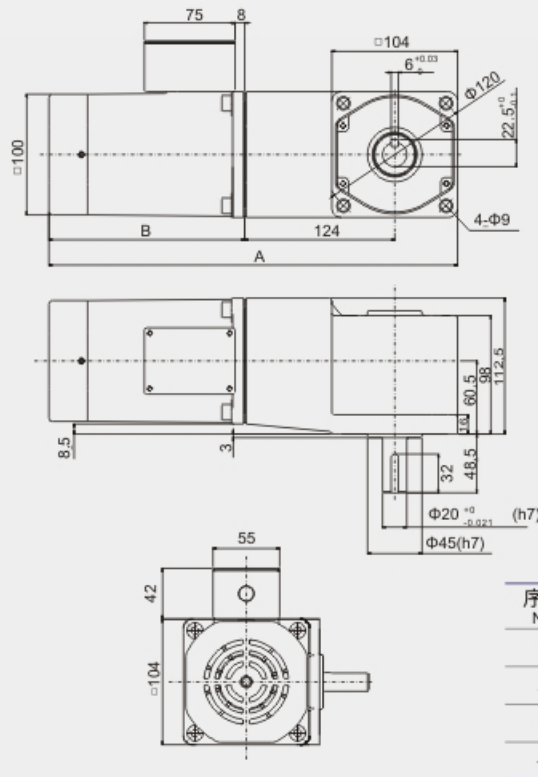
140/200YS/YT/YB/YF03

组合: 电机+直角中实减速箱

减速比: 1:3~200

质量: 8.8kg

Portfolio: motor + right-angle solid gearbox
Reduction ratio: 1:3~200
Mass: 8.8kg



序号 No.	电机类型 Motor type	A	B
1	YS	338	162
2	YT	350	174
3	YB	368	192
4	YF	386	210

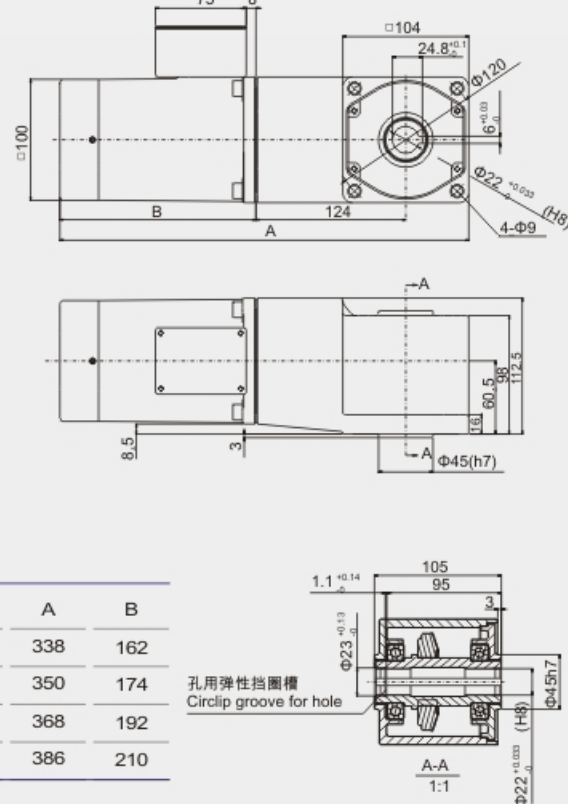
140/200YS/YT/YB/YF04

组合: 电机+直角中空减速箱

减速比: 1:3~200

质量: 8.6kg

Portfolio: motor + right angle hollow gearbox
Reduction ratio: 1:3~200
Mass: 8.6kg



孔用弹性挡圈槽
Circlip groove for hole

数显面板调速器

Digital Panel SPEED GOVERNOR

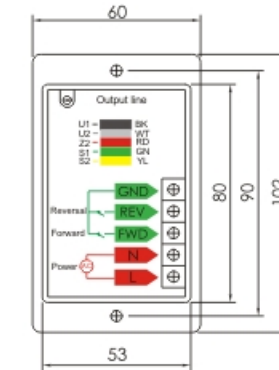
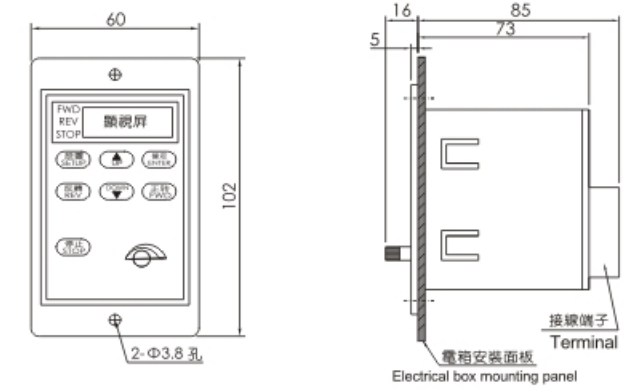
数显面板调速器

Digital Panel SPEED GOVERNOR



数显面板调速器 DIGITAL PANEL SPEED GOVERNOR

WS-L外形尺寸 WS-L dimensions



特点 FEATURES

- 与调速电机组合实现宽范围的无级变速。
Achieve continuously variable transmission in a wide range combined with variable speed motor
- 功能丰富, 可实现缓慢加速, 缓慢减速及电机堵转保护。
Feature-rich, enabling slow acceleration, slow deceleration and motor stall protection.
- 调速器运行电容直接安装于调速器内部, 布线整齐、方便。
The capacitor for speed governor running is mounted directly inside the governor, featuring neat and convenient wiring.

型号参数表 MODEL PARAMETERS

型号 MODEL	WS-L	
安装方式 INSTALLATION METHOD	数显面板式	Digital panel
调速方法 SPEED REGULATION	面板按钮及电位器	Panel Key and potentiometer
电源电压 SUPPLY VOLTAGE	单相220Vac	Single phase 220Vac
控制功能 CONTROL FEATURES	速度控制、缓慢加速、缓慢减速、电子制动、堵转保护、面板控制正反转、转速显示、面板按键控制有记忆、倍率设定与外接开关K1及K2可直接接PLC控制。 Speed control, slow acceleration, slow deceleration, electronic brake, stall protection, panel control forward and reverse rotation, speed display, Digital display key controlled, it will be remembered, ratio setting and choose external switch K1 AND K2 Can connect with PLC to control directly.	
适用电机功率范围 APPLICABLE MOTOR POWER RANGE	6W~200W	
运行电容 RUNNING CAPACITOR	内置Built-in	
电源频率 POWER FREQUENCY	50/60Hz	
调速范围 SPEED RANGE	50Hz:90~1300r/min 60Hz:90~1600r/min	
速度变化率 RATE OF SPEED CHANGE	5%	
电子制 ELECTRONIC BRAKING TIME	0.4秒sec	
动时间使用环境 ENVIRONMENT OF USE	-10°C~+40°C无冻结No freezing, <85%(无结露No condensation)	

面板调速器

Panel SPEED GOVERNOR

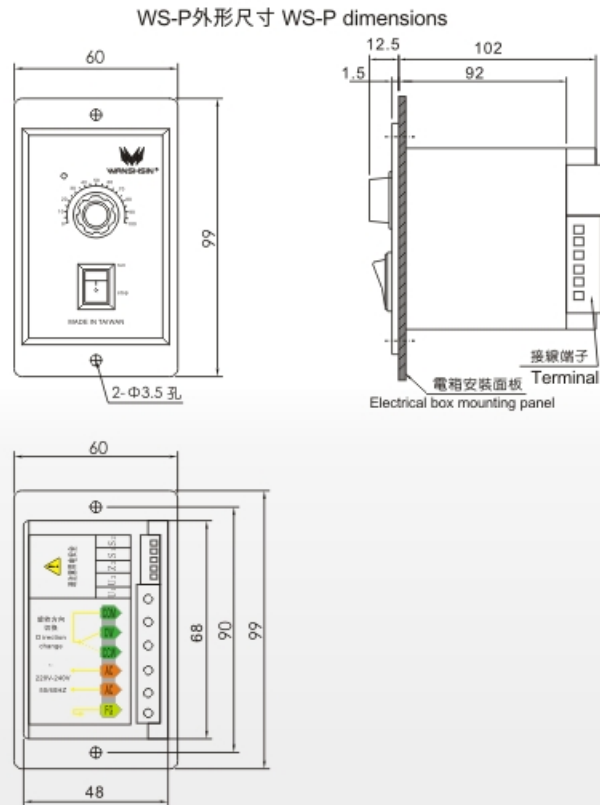
面板调速器 Panel SPEED GOVERNOR



特点 FEATURES

- 与调速电机组实现宽范围的无级变速。
Achieve continuously variable transmission in a wide range combined with variable speed motor
- 功能丰富, 可实现缓慢加速, 缓慢减速及电机堵转保护。
Feature-rich, enabling slow acceleration, slow deceleration and motor stall protection.
- 调速器运行电容直接安装于调速器内部, 布线整齐、方便。
The capacitor for speed governor running is mounted directly inside the governor, featuring neat and convenient wiring.

■ 面板式调速器 PANEL SPEED GOVERNOR



■ 型号参数表 MODEL PARAMETERS

型号 MODEL	WS-P
安装方式 INSTALLATION METHOD	面板式 Panel
调速方法 SPEED REGULATION	面板电位器 Panel potentiometer
电源电压 SUPPLY VOLTAGE	单相220V Single phase 220V
控制功能 CONTROL FEATURES	速度控制、缓慢加速、缓慢减速、电子制动 Speed control, slow acceleration, slow deceleration, electronic brake
适用电机功率范围 APPLICABLE MOTOR POWER RANGE	6W~200W
运行电容 RUNNING CAPACITOR	内置Built-in
电源频率 POWER FREQUENCY	50/60Hz
调速范围 SPEED RANGE	50Hz:90~1300r/min 60Hz:90~1600r/min
速度变化率 RATE OF SPEED CHANGE	5%
电子制 ELECTRONIC BRAKING TIME	0.4秒sec
动时间使用环境 ENVIRONMENT OF USE	-10°C~+40°C无冻结No freezing, <85%(无结露No condensation)

多功能调速器

MULTI-FUNCTION SPEED GOVERNOR

多功能调速器 MULTI-FUNCTION SPEED GOVERNOR

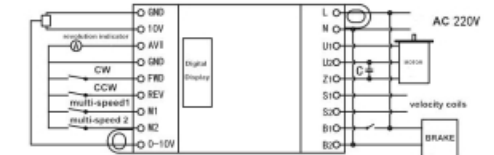


特点 FEATURES

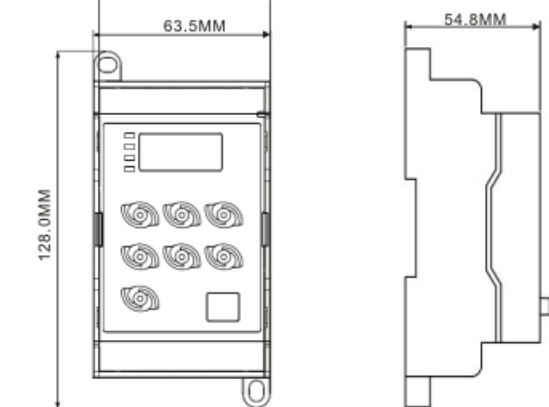
- 与调速电机组实现宽范围的无级变速。
Achieve continuously variable transmission in a wide range combined with variable speed motor
- 功能丰富, 可实现缓慢加速, 缓慢减速及电机堵转保护。
Feature-rich, enabling slow acceleration, slow deceleration and motor stall protection.
- 调速器运行电容直接安装于调速器内部, 布线整齐、方便。
The capacitor for speed governor running is mounted directly inside the governor, featuring neat and convenient wiring.

■ 多功能调速器 MULTI-FUNCTION SPEED GOVERNOR

WX-K Drawing of the speed controller



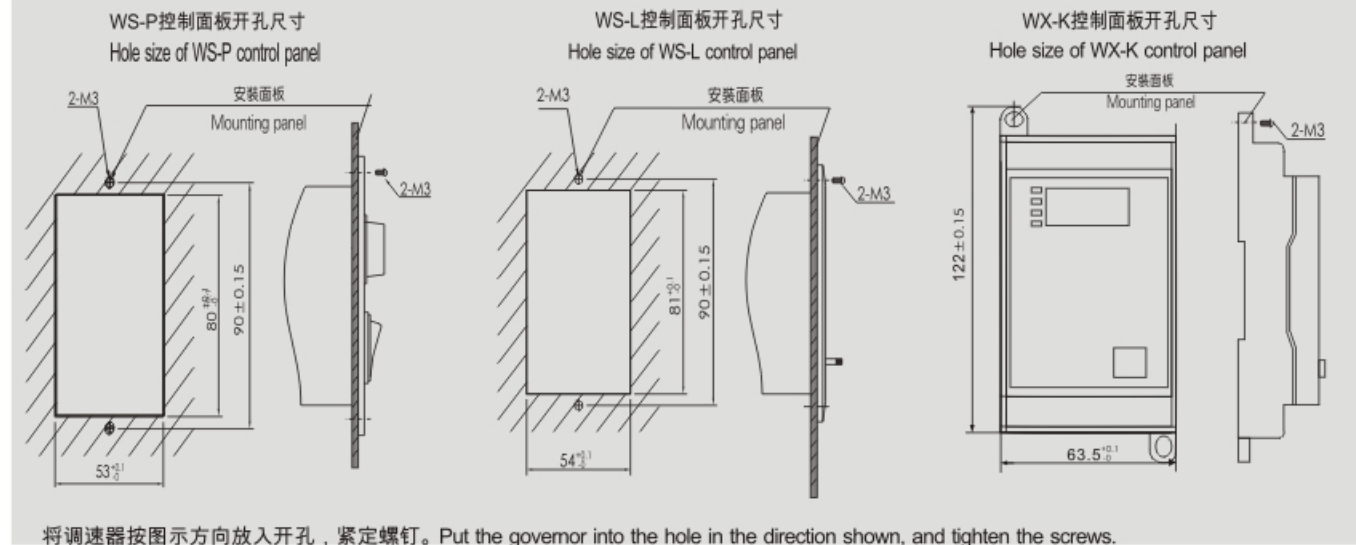
WX-K外形尺寸 WX-K dimensions



■ 型号参数表 MODEL PARAMETERS

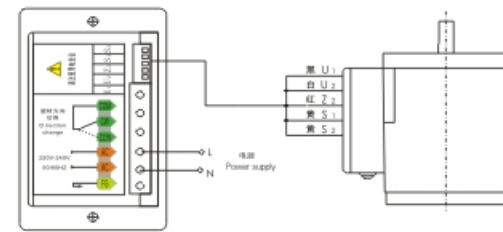
型号 MODEL	WX-K
安装方式 INSTALLATION METHOD	多功能内置式 Multi-Function(Built-in)
调速方法 SPEED REGULATION	面板按钮及电位器 Panel Key and potentiometer
电源电压 SUPPLY VOLTAGE	单相220Vac Single phase 220Vac
控制功能 CONTROL FEATURES	速度控制、缓慢加速、缓慢减速、堵转保护、控制正反转、转速显示、面板按键控制有记忆、倍率设定、4段速、失电电磁制动停止、0~10V模拟量控制与外接开关K1及K2可直接接PLC控制。 Speed control, slow acceleration, slow deceleration, electronic brake, stall protection, panel control Forward and reverse rotation, speed display, Digital display key controlled, it will be remembered, ratio Setting, 4 stage speed, the electromagnetic brake stop.0~10V analog controlled and choose external Switch K1 AND K2 Can connect with PLC to control directly.
适用电机功率范围 APPLICABLE MOTOR POWER RANGE	6W~200W
运行电容 RUNNING CAPACITOR	内置Built-in
电源频率 POWER FREQUENCY	50/60Hz
调速范围 SPEED RANGE	50Hz:90~1300r/min 60Hz:90~1600r/min
速度变化率 RATE OF SPEED CHANGE	5%
电子制 ELECTRONIC BRAKING TIME	0.4秒sec
动时间使用环境 ENVIRONMENT OF USE	-10°C~+40°C无冻结No freezing, <85%(无结露No condensation)

■ 面板式调速器的安装 INSTALLATION OF PANEL SPEED GOVERNOR

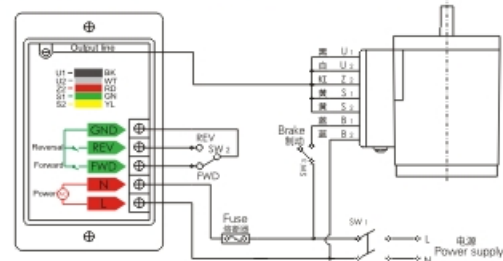


■ 接线方法 WIRING METHOD

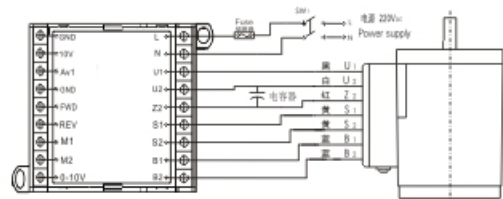
单向旋转 Unidirectional rotation



正、反向旋转 Forward and reverse rotation



控制接线图 Drawing the speed controller



■ 旋转方向 DIRECTION OF ROTATION

调速器出厂时，旋转方向选择软线连接于L与FWD端，电机顺时针旋转，若需使电机逆时针旋转，仅需将软线连接于REV端。若需正、反向旋转，则在FWD、REV连接旋转方向选择开关。

When the governor is delivered, the cord of rotation direction selection has been connected to the L and FWD terminal, and the motor rotates clockwise; to make the motor rotate counterclockwise, just connect the cord to the REV terminal. For forward and reverse rotation, connect FWD and REV terminals.

注：型号WS-L可选择面板按键控制正反转，或是手动接后面板

Note: Model WS-L allows controlling forward and reverse rotation with the panel button, or manually connect rear panel wiring.

■ 电机制动停止 MOTOR BRAKE STOPS

当电机停止运转时，断开SW3，电机内失电电磁制动器刹车，电机电磁制动，保持负载。在电机正常运转时，断开SW3，电机内失电电磁制动器刹车，电机电磁制动，保持负载。在电机正常运转时，断开SW3，电机内失电电磁制动器刹车，电机电磁制动，保持负载。

When the motor stops running, disconnect SW3, the de-energized electromagnetic brake in the motor brakes, and the motor brakes and maintains the load. In the normal operation of the motor, it is not allowed to disconnect SW3, or else

● 特别注意 Special Note

B1、B2通电，失电电磁制动器不刹车；B1、B2断电，失电电磁制动器刹车。刹车电源开关必须与电机同步。

When B1 and B2 are energized, the de-energized electromagnetic brake won't brake; when B1 and B2 are de-energized, the de-energized electromagnetic brake brakes. Brake power switch must be synchronized with the motor

■ 运转操作 RUNNING OPERATION

将调速器与电机按图连接，然后打开AC电源。闭合SW3，电机内失电电磁制动器通电，电磁制动

■ 转速调整 SPEED ADJUSTMENT

顺时针旋转面板上的调速器旋钮，电机转速增加，电机调整范围：50Hz:90~1300r/min

Rotate the speed control knob clockwise on the panel, and the motor speed increases; the range of adjustment: 50Hz:

● 特别注意 Special Note

严禁使用SW1电源开关作为运行/制动开关/停产调速器，并使用电机停止制动保持负载，否则易造成调速器损坏。现时由于调速器每次开电源时其内部电路有充电时间，故无法立即启动电机，动

Do not use SW1 power switch as the start/stop speed governor of running/brake switch and stop braking with the motor and hold the load, or else it will damage the speed governor easily. At present, internal circuit needs time to charge when the speed governor is turned on every time, the motor won't be started immediately, and the action will be

■ 停止 STOP

将调速器面板上的开关切换到STOP，电机停止。

Turn the switch on the governor panel to STOP, and the motor stops.

注：此开关并非电源开关，若电机长期停止运转，则请另设电源开关。

NOTE: This switch is not a power switch. If the motor stops running for a long time, please equip a separate power switch.

■ 外部连接 External Connect

注：型号WX-K可选择面板按键控制正反转或选择外接开关时，由FWD及REV外接开关K1及K2控制电机。K1,K2可直接PLC控制。外接电位器连接于0-10V模拟量AVI输入端。

Note: Model WX-K allows controlling forward and reverse rotation with the panel button, or Choose External switch control, FWD&REV buttons connect with external switch K1&K2 to motor,K1,K2 can connect with PLC to control motor directly.

FWD&REV buttons connect with external switch K1&K2 to motor,K1,K2 can connect with PLC to control motor directly.

External connect potentiometer with 0-10V Analog AVI input port.

微型直流电机

MICRO DC MOTOR

各型号电机性能 MOTOR PERFORMANCE

机座号 MODEL	电压V VOLTAGE	功率W POWER	负载参数 LOAD PARAMETERS			电刷寿命h BRUSH LIFE	电机重量kg MOTOR WEIGHT
			转速SPEED r/min	力矩TORQUE kg·cm	电流As CURRENT		
60DC10GV12R16	12	10	1600	0.62	1.24	2000	0.7
60DC10GV24R16	24	10	1600	0.62	0.62	2000	0.7
60DC15GV12R16	12	15	1600	0.93	1.87	2000	0.9
60DC15GV24R16	24	15	1600	0.93	0.93	2000	0.9
60DC20GV12R16	12	20	1600	1.24	2.49	2000	0.9
60DC20GV24R16	24	20	1600	1.24	1.24	2000	0.9

减速箱减速比性能对照表 REDUCTION RATIO PERFORMANCE CHART

转速 r/min SPEED	减速比 REDUCTION RATIO	3	3.6	5	6	7.5	10	12.5	15	18	20	25	30
1600	出力轴转速r/min OUTPUT BEARING SPEED	533	444	320	267	213	160	128	107	89	80	64	53
	额定转矩N·m RATED TORQUE	0.129	0.154	0.215	0.259	0.324	0.43	0.53	0.64	0.769	0.77	0.97	1.16
1600	出力轴转速r/min OUTPUT BEARING SPEED	36	40	50	60	75	90	100	120	150	180	200	
	额定转矩N·m RATED TORQUE	1.39	1.55	1.93	2.32	3	3	3	3	3	3	3	3



标准减速箱
STANDARD GEARBOX
60GK □H

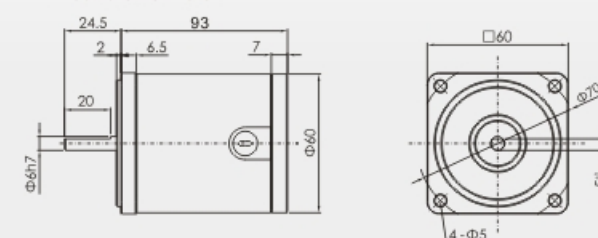
减速箱型号中的□为减速比的数值
速比：1:3~200
□ in gearbox model indicates the reduction ratio (1:3~200)

外形尺寸 (CAD) DIMENSIONS

60DC(10W/15W)

圆轴电机

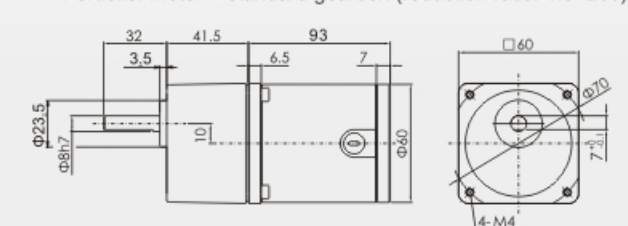
Round-axis motor



60DC(10W/15W)

组合：电机+标准减速箱 (减速比：1:3~200)

Portfolio: motor + standard gearbox (reduction ratio: 1:3~200)



70DC

20W/30W

各型号电机性能 MOTOR PERFORMANCE

机座号 MODEL	电压V VOLTAGE	功率W POWER	负载参数 LOAD PARAMETERS			电刷寿命h BRUSH LIFE	电机重量kg MOTOR WEIGHT
			转速SPEED r/min	力矩TORQUE kg·cm	电流As CURRENT		
70DC20GV12R16	12	20	1600	1.24	2.49	2000	1.0
70DC20GV24R16	24	20	1600	1.24	1.24	2000	1.0
70DC20GV90R16	90	20	1600	1.24	0.33	2000	1.0
70DC30GV12R16	12	30	1600	1.86	3.73	2000	1.1
70DC30GV24R16	24	30	1600	1.86	1.87	2000	1.1
70DC30GV90R16	90	30	1600	1.86	0.50	2000	1.1

减速箱减速比性能对照表 REDUCTION RATIO PERFORMANCE CHART

转速 r/min SPEED	减速比 REDUCTION RATIO	3	3.6	5	6	7.5	10	12.5	15	18	20	25	30
1600	出力轴转速r/min OUTPUT BEARING SPEED	533	444	320	267	213	160	128	107	89	80	64	53
	额定转矩N·m RATED TORQUE	0.26	0.31	0.43	0.52	0.86	0.86	1.08	1.29	1.39	1.55	1.93	2.32
1600	减速比 REDUCTION RATIO	36	40	50	60	75	90	100	120	150	180	200	
	出力轴转速r/min OUTPUT BEARING SPEED	44	40	32	27	21	18	16	13	11	9	8	
	额定转矩N·m RATED TORQUE	2.78	3.09	3.86	4.46	5	5	5	5	5	5	5	



标准减速箱
STANDARD GEARBOX
70GK □H

减速箱型号中的□为减速比的数值

速比：1:3~200

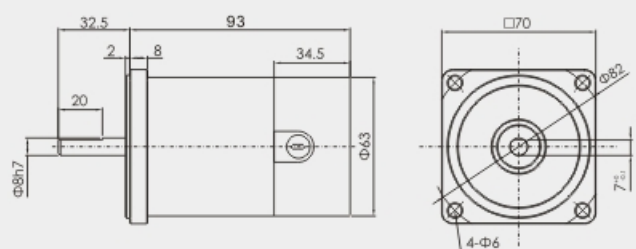
□ in gearbox model indicates the reduction ratio (1:3~200)

外形尺寸 (CAD) DIMENSIONS

70DC(20W/36W)

圆轴电机

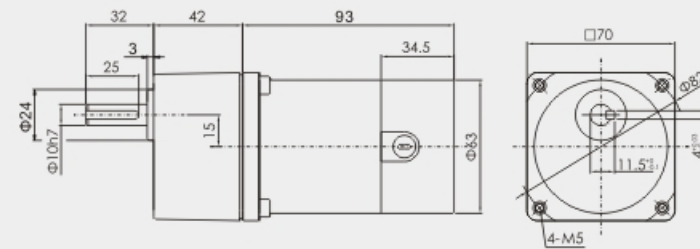
Round-axis motor



70DC(20W/36W)

组合：电机+标准减速箱 (减速比：1:3~200)

Portfolio: motor + standard gearbox (reduction ratio: 1:3~200)



各型号电机性能 MOTOR PERFORMANCE

机座号 MODEL	电压V VOLTAGE	功率W POWER	负载参数 LOAD PARAMETERS			电刷寿命h BRUSH LIFE	电机重量kg MOTOR WEIGHT
			转速SPEED r/min	力矩TORQUE kg·cm	电流As CURRENT		
80DC30GV12R16	12	30	1600	1.86	3.73	2000	1.8
80DC30GV24R16	24	30	1600	1.86	1.87	2000	1.8
80DC30GV90R16	90	30	1600	1.86	0.50	2000	1.8
80DC60GV12R16	12	60	1600	3.73	7.46	2000	1.9
80DC60GV24R16	24	60	1600	3.73	3.73	2000	1.9
80DC60GV90R16	90	60	1600	3.73	1.00	2000	1.9

减速箱减速比性能对照表 REDUCTION RATIO PERFORMANCE CHART

转速 r/min SPEED	减速比 REDUCTION RATIO	3	3.6	5	6	7.5	10	12.5	15	18	20	25	30
1600	出力轴转速r/min OUTPUT BEARING SPEED	533	444	320	267	213	160	128	107	89	80	64	53
	额定转矩N·m RATED TORQUE	0.386	0.464	0.644	0.773	0.966	1.288	1.61	1.932	2.318	2.576	3.22	3.477
1600	减速比 REDUCTION RATIO	36	40	50	60	75	90	100	120	150	180	200	
	出力轴转速r/min OUTPUT BEARING SPEED	44	40	32	27	21	18	16	13	11	9	8	
	额定转矩N·m RATED TORQUE	4.173	4.63	5.796	6.995	8	8	8	8	8	8	8	



标准减速箱
STANDARD GEARBOX
80GK □H



直角中空减速箱
RIGHT ANGLE HOLLOW GEARBOX
L80GK □RC



直角中实减速箱
RIGHT ANGLE SOLID GEARBOX
L80GK □RT

减速箱型号中的□为减速比的数值

速比：1:3~200

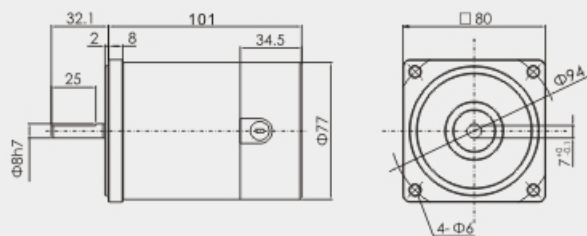
□ in gearbox model indicates the reduction ratio (1:3~200)

外形尺寸 (CAD) DIMENSIONS

80DC(30W/60W)

圆轴电机

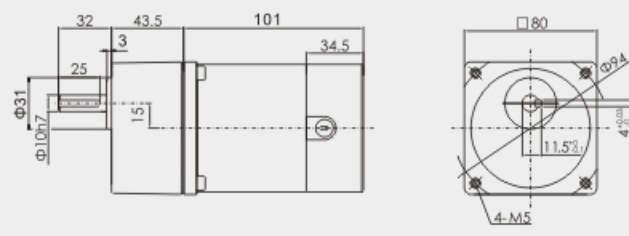
Round-axis motor



80DC(30W/60W)

组合：电机+标准减速箱 (减速比：1:3~200)

Portfolio: motor + standard gearbox (reduction ratio: 1:3~200)

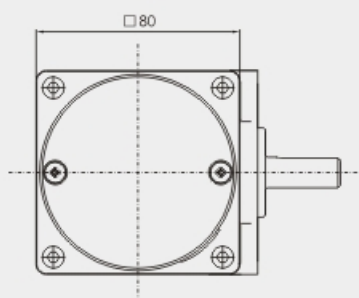
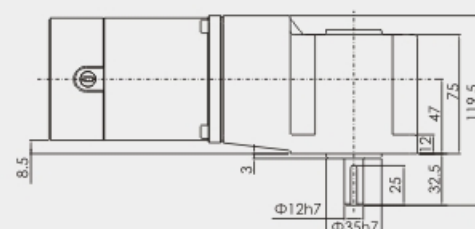
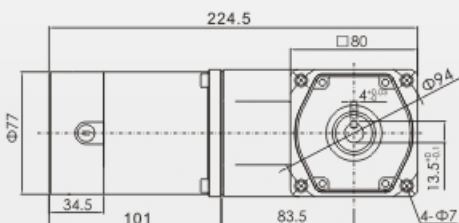


80DC(30W/60W)

组合：电机+直角中实减速箱

减速比：1:3~200

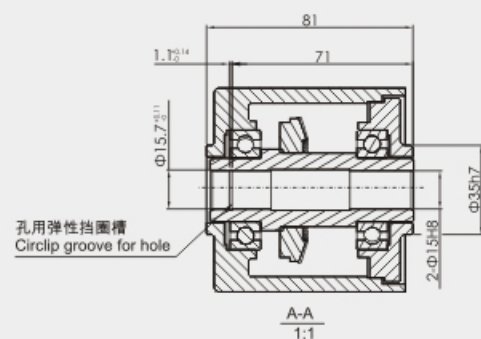
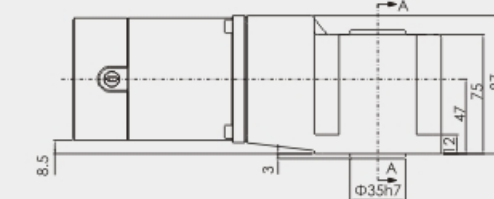
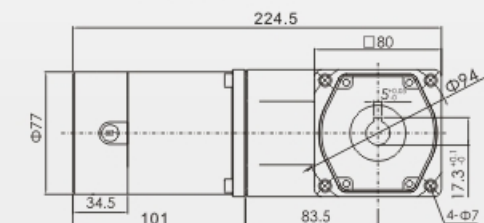
Portfolio: motor + right-angle solid gearbox
Reduction ratio: 1:3~200



组合：电机+直角中空减速箱

减速比：1:3~200

Portfolio: motor + right angle hollow gearbox
Reduction ratio: 1:3~200



各型号电机性能

机座号 MODEL	电压V VOLTAGE	功率W POWER	负载参数 LOAD PARAMETERS			电刷寿命h BRUSH LIFE	电机重量kg MOTOR WEIGHT
			转速SPEED r/min	力矩TORQUE kg·cm	电流As CURRENT		
90DC40GV12R16	12	40	1600	2.48	4.98	2000	1.9
90DC40GV24R16	24	40	1600	2.48	2.49	2000	1.9
90DC40GV90R16	90	40	1600	2.48	0.66	2000	1.9
90DC70GV12R16	12	70	1600	4.35	8.71	2000	2.0
90DC70GV24R16	24	70	1600	4.35	4.35	2000	2.0
90DC70GV90R16	90	70	1600	4.35	1.16	2000	2.0
90DC65GV12R16	12	65	1600	4.04	8.08	2000	2.0
90DC65GV24R16	24	65	1600	4.04	4.04	2000	2.0
90DC65GV90R16	90	65	1600	4.04	1.08	2000	2.0
90DC65GV180R16	180	65	1600	4.04	0.54	2000	2.0
90DC120GV12R16	12	120	1600	7.45	14.93	2000	2.2
90DC120GV24R16	24	120	1600	7.45	7.46	2000	2.2
90DC120GV90R16	90	120	1600	7.45	1.99	2000	2.2
90DC120GV180R16	180	120	1600	7.45	1.00	2000	2.2
90DC100GV12R16	12	100	1600	6.21	12.44	2000	2.1
90DC100GV24R16	24	100	1600	6.21	6.22	2000	2.1
90DC100GV90R16	90	100	1600	6.21	1.66	2000	2.1
90DC100GV180R16	180	100	1600	6.21	0.83	2000	2.1
90DC200GV12R16	12	200	1600	12.42	24.88	2000	2.3
90DC200GV24R16	24	200	1600	12.42	12.44	2000	2.3
90DC200GV90R16	90	200	1600	12.42	3.32	2000	2.3
90DC200GV180R16	180	200	1600	12.42	1.66	2000	2.3

90DC

40W/70W
65W/120W
100W/200W

減速箱減速比性能對照表 REDUCTION RATIO PERFORMANCE CHART

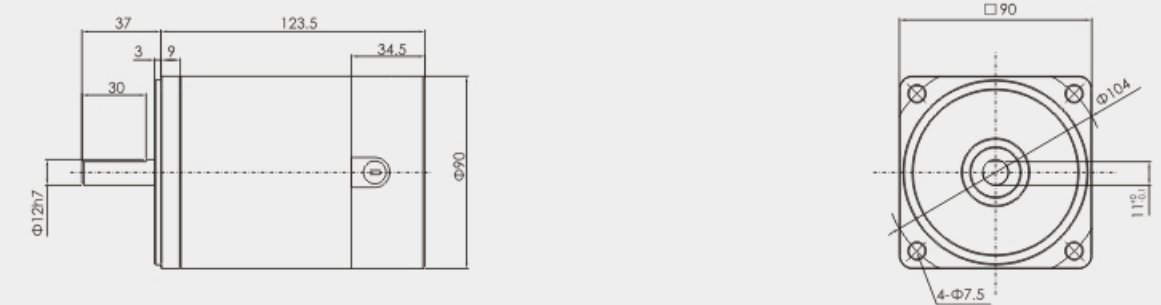
■ 40W/70W													
轉速 r/min SPEED	減速比 REDUCTION RATIO	3	3.6	5	6	7.5	10	12.5	15	18	20	25	30
1600	出力軸轉速 r/min OUTPUT BEARING SPEED	533	444	320	267	213	160	128	107	89	80	64	53
	額定轉矩 N·m RATED TORQUE	0.52	0.62	0.86	0.86	1.29	1.72	1.93	2.32	2.78	3.09	3.87	4.64
轉速 r/min SPEED	減速比 REDUCTION RATIO	36	40	50	60	75	90	100	120	150	180	200	
1600	出力軸轉速 r/min OUTPUT BEARING SPEED	44	40	32	27	21	18	16	13	11	9	8	
	額定轉矩 N·m RATED TORQUE	5.57	6.19	6.96	8.35	10.44	12.53	13.92	16.7	20	20	20	
■ 65W/120W													
轉速 r/min SPEED	減速比 REDUCTION RATIO	3	3.6	5	6	7.5	10	12.5	15	18	20	25	30
1600	出力軸轉速 r/min OUTPUT BEARING SPEED	533	444	320	267	213	160	128	107	89	80	64	53
	額定轉矩 N·m RATED TORQUE	0.838	1.0	1.397	1.677	2.096	2.975	3.144	3.773	4.527	5.03	6.288	7.545
轉速 r/min SPEED	減速比 REDUCTION RATIO	36	40	50	60	75	90	100	120	150	180	200	
1600	出力軸轉速 r/min OUTPUT BEARING SPEED	44	40	32	27	21	18	16	13	11	9	8	
	額定轉矩 N·m RATED TORQUE	9.054	10.06	11.32	13.58	16.977	20	20	20	20	20	20	
■ 100W/200W													
轉速 r/min SPEED	減速比 REDUCTION RATIO	3	3.6	5	6	7.5	10	12.5	15	18	20	25	30
1600	出力軸轉速 r/min OUTPUT BEARING SPEED	533	444	320	267	213	160	128	107	89	80	64	53
	額定轉矩 N·m RATED TORQUE	1.29	1.55	2.15	2.58	3.22	4.3	4.83	5.8	6.96	7.74	9.67	11.6
轉速 r/min SPEED	減速比 REDUCTION RATIO	36	40	50	60	75	90	100	120	150	180	200	
1600	出力軸轉速 r/min OUTPUT BEARING SPEED	44	40	32	27	21	18	16	13	11	9	8	
	額定轉矩 N·m RATED TORQUE	13.92	15.47	17.41	20	20	20	20	20	20	20	20	

外形尺寸 (CAD) DIMENSIONS

90DC(40W/70W)

圓軸電機

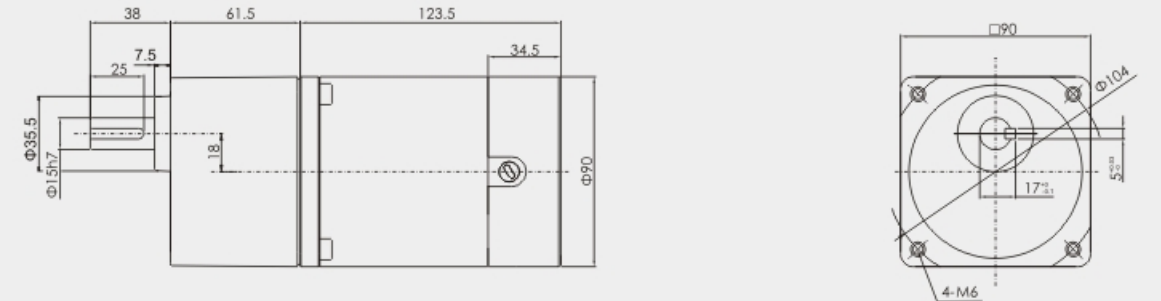
Round-axis motor



90DC(40W/70W)

組合：電機+標準減速箱 (減速比：1:3~200)

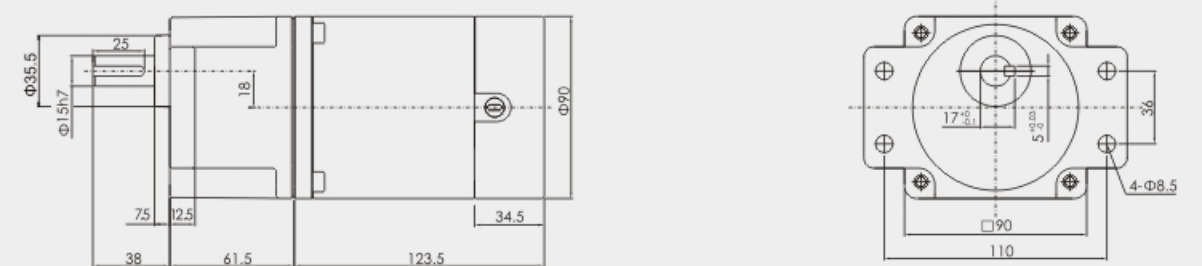
Portfolio: motor + standard gearbox (reduction ratio: 1:3~200)



90DC(40W/70W)

組合：電機+帶耳減速箱 (減速比：1:3~200)

Portfolio: motor + eared gear (reduction ratio: 1:3~200)

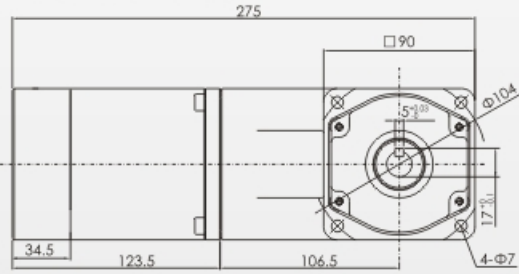


外形尺寸 (CAD) DIMENSIONS

90DC(40W/70W)

组合：电机+直角中实减速箱（减速比：1:3~200）

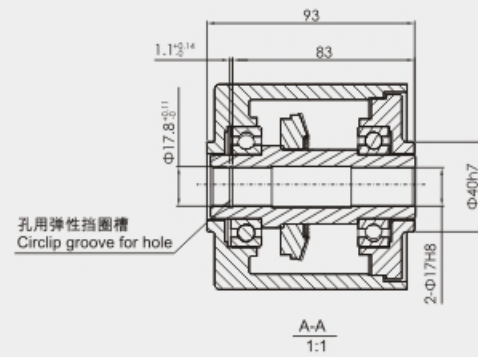
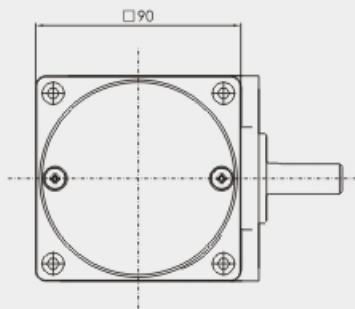
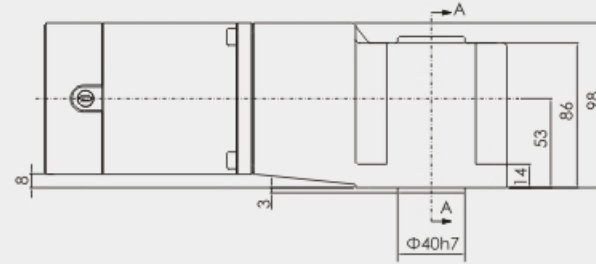
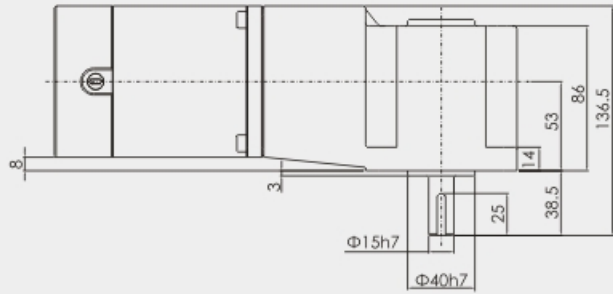
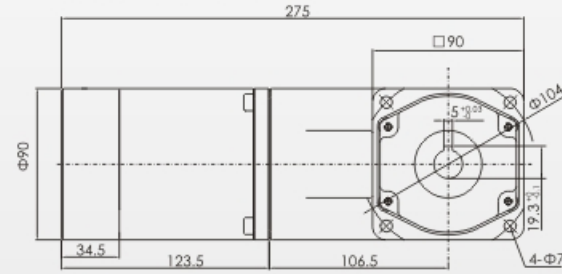
Portfolio: motor + right-angle solid gearbox
Reduction ratio: 1:3~200



90DC(40W/70W)

组合：电机+直角中空减速箱（减速比：1:3~200）

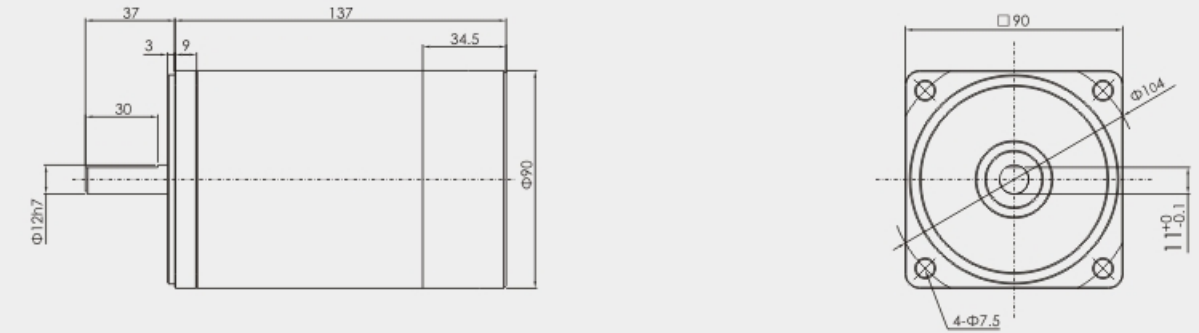
Portfolio: motor + right angle hollow gearbox
Reduction ratio: 1:3~200



90DC(65W/120W)

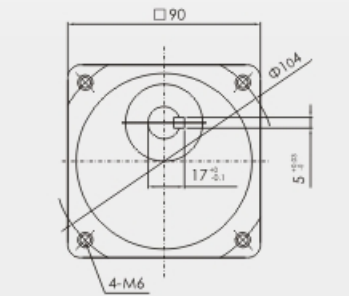
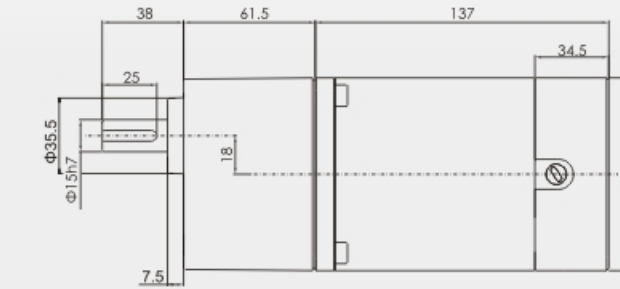
圆轴电机

Round-axis motor



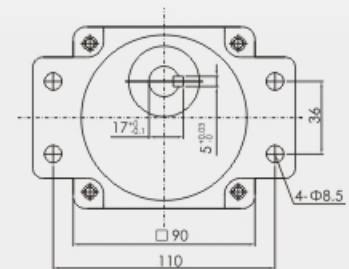
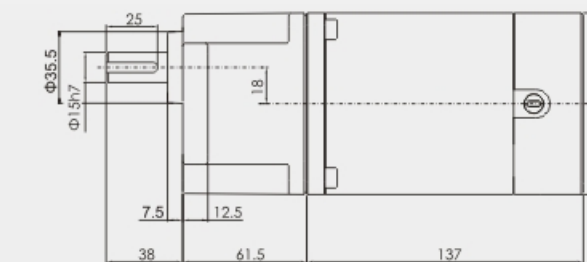
组合：电机+标准减速箱（减速比：1:3~200）

Portfolio: motor + standard gearbox (reduction ratio: 1:3~200)



组合：电机+带耳减速箱（减速比：1:3~200）

Portfolio: motor + eared gear (reduction ratio: 1:3~200)

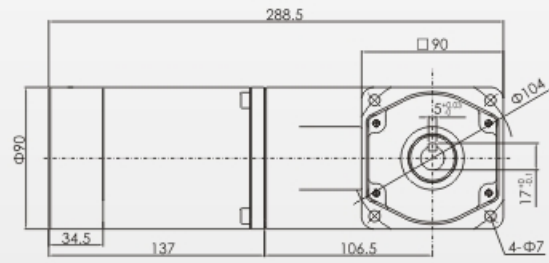


外形尺寸 (CAD) DIMENSIONS

90DC(65W/120W)

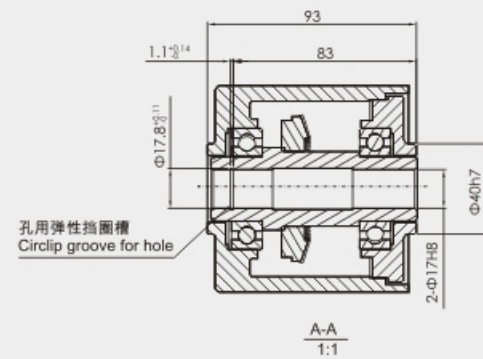
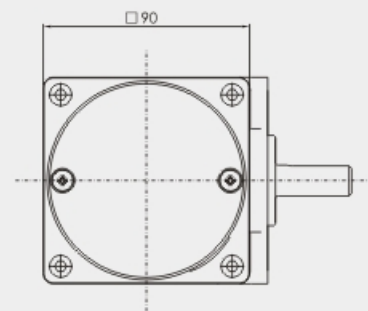
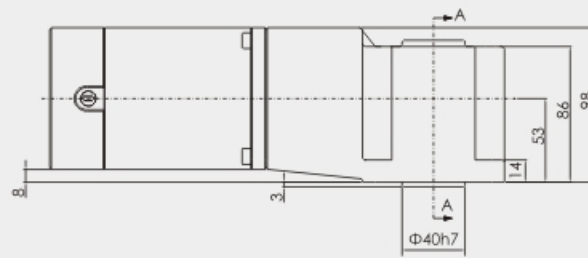
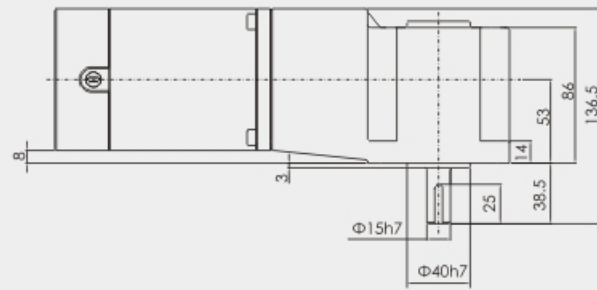
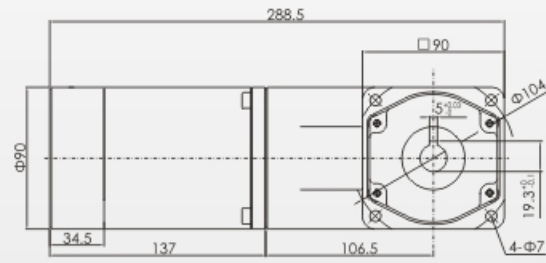
组合：电机+直角中实减速箱 (减速比：1:3~200)

Portfolio: motor + right-angle solid gearbox
Reduction ratio: 1:3~200



组合：电机+直角中空减速箱 (减速比：1:3~200)

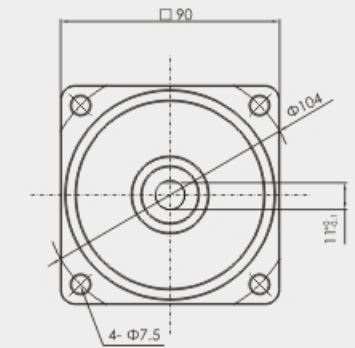
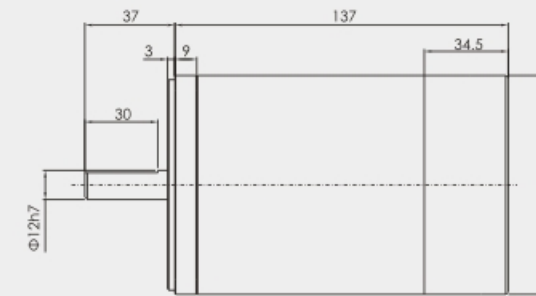
Portfolio: motor + right angle hollow gearbox
Reduction ratio: 1:3~200



90DC(100W/200W)

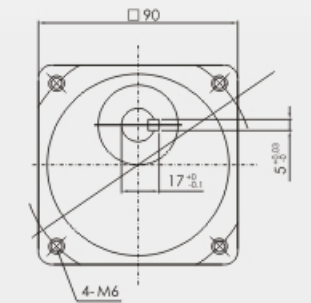
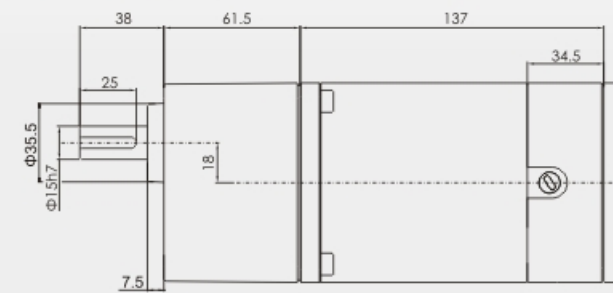
圆轴电机

Round-axis motor



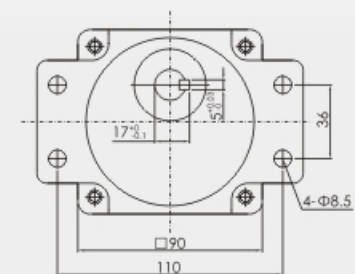
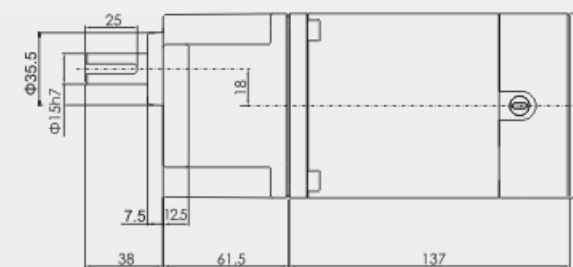
组合：电机+标准减速箱 (减速比：1:3~200)

Portfolio: motor + standard gearbox (reduction ratio: 1:3~200)



组合：电机+带耳减速箱 (减速比：1:3~200)

Portfolio: motor + eared gear (reduction ratio: 1:3~200)

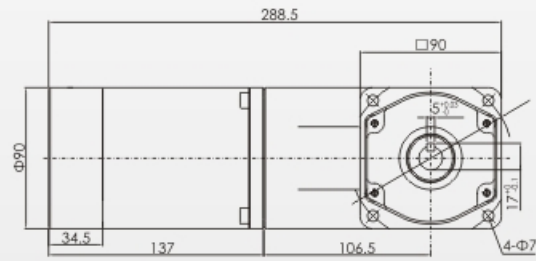


外形尺寸 (CAD) DIMENSIONS

90DC(100W/200W)

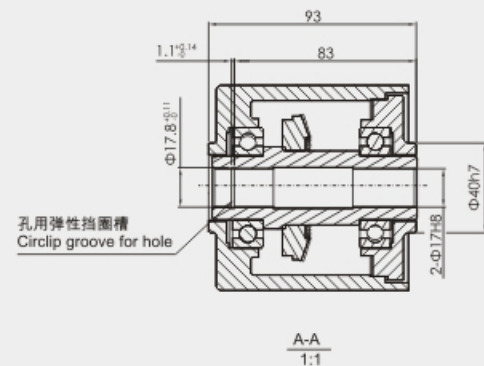
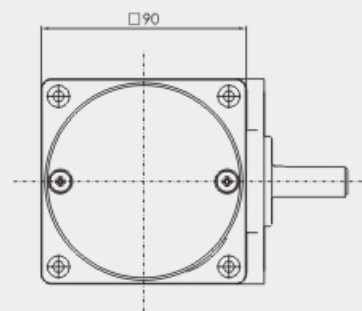
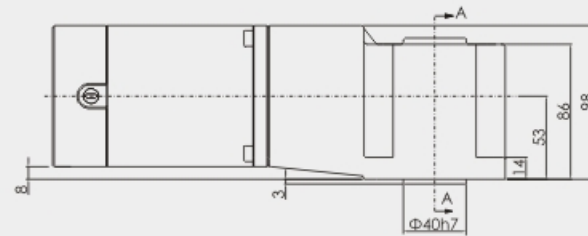
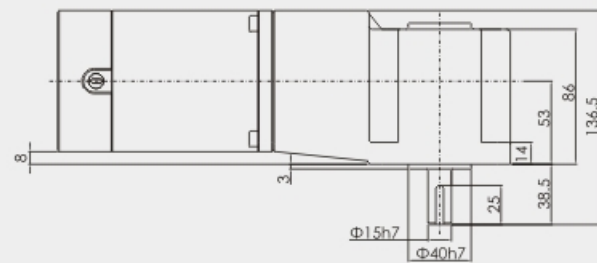
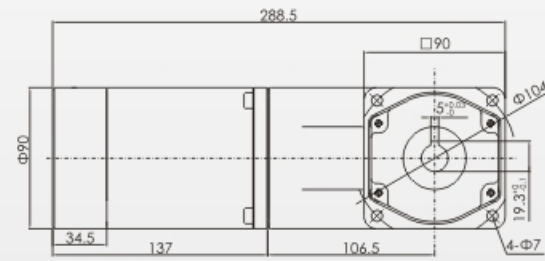
组合：电机+直角中实减速箱 (减速比：1:3~200)

Portfolio: motor + right-angle solid gearbox
Reduction ratio: 1:3~200



组合：电机+直角中空减速箱 (减速比：1:3~200)

Portfolio: motor + right angle hollow gearbox
Reduction ratio: 1:3~200



各型号电机性能 MOTOR PERFORMANCE

机座号 MODEL	电压V VOLTAGE	功率W POWER	负载参数 LOAD PARAMETERS			电刷寿命h BRUSH LIFE	电机重量kg MOTOR WEIGHT
			转速SPEED r/min	力矩TORQUE kg·cm	电流As CURRENT		
100DC200GV24R18	24	200	1800	11.04	12.44	2000	2.4
100DC200GV90R18	90	200	1800	11.04	3.32	2000	2.4
100DC200GV180R18	180	200	1800	11.04	1.66	2000	2.4
100DC300GV24R18	24	300	1800	16.56	18.66	2000	2.5
100DC300GV90R18	90	300	1800	16.56	4.98	2000	2.5
100DC300GV180R18	180	300	1800	16.56	2.49	2000	2.5

100DC

200W/300W

减速箱减速比性能对照表 REDUCTION RATIO PERFORMANCE CHART

转速 r/min SPEED	减速比 REDUCTION RATIO	3	3.6	5	6	7.5	10	12.5	15	18	20	25	30
1800	出力轴转速r/min OUTPUT BEARING SPEED	600	500	360	300	240	180	144	120	100	90	72	60
	额定转矩N·m RATED TORQUE	2.578	3.094	4.297	5.156	6.446	8.594	10.74	11.6	13.92	15.47	19.34	23.21
转速 r/min SPEED	减速比 REDUCTION RATIO	36	40	50	60	75	90	100	120	150	180	200	
1800	出力轴转速r/min OUTPUT BEARING SPEED	50	45	36	30	24	20	18	15	12	10	9	
	额定转矩N·m RATED TORQUE	27.85	30.94	38.68	41.77	44	44	44	44	44	44	44	



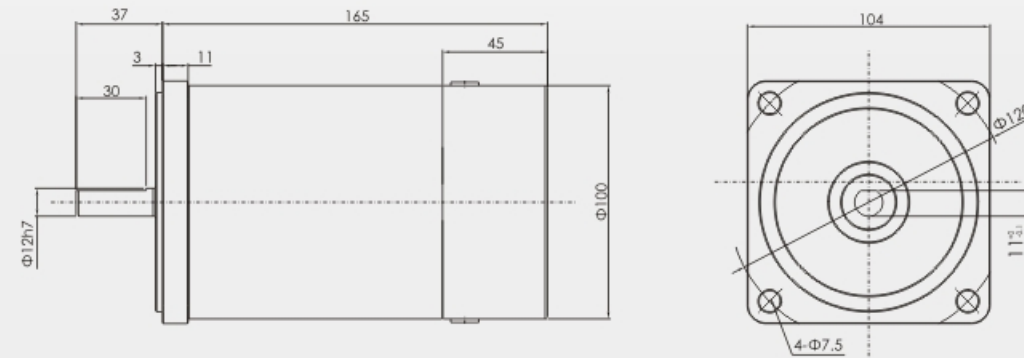
减速箱型号中的□为减速比的数值
速比：1:3~200
□ in gearbox model indicates the reduction ratio (1:3~200)

外形尺寸 (CAD) DIMENSIONS

100DC(200W/300W)

圆轴电机

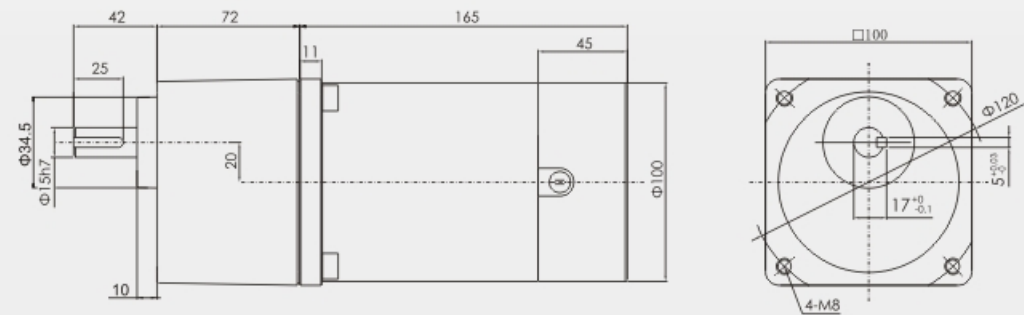
Round-axis motor



100DC(200W/300W)

组合：电机+标准减速箱 (减速比：1:3~200)

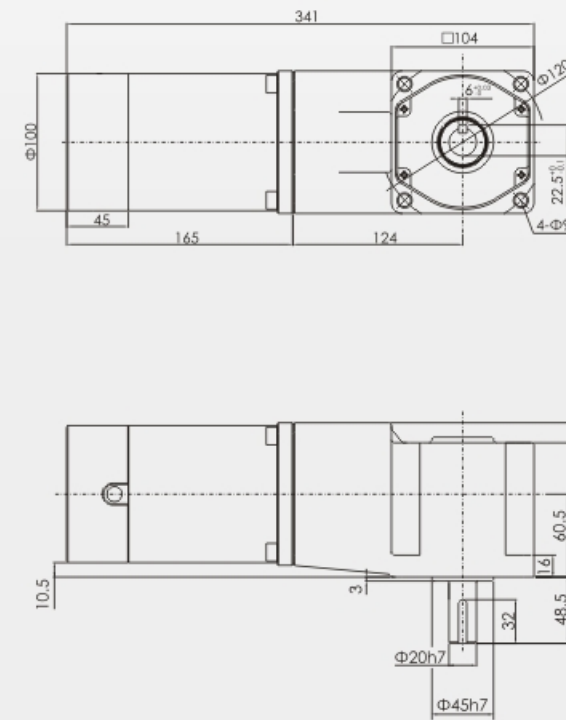
Portfolio: motor + standard gearbox (reduction ratio: 1:3~200)



100DC(200W/300W)

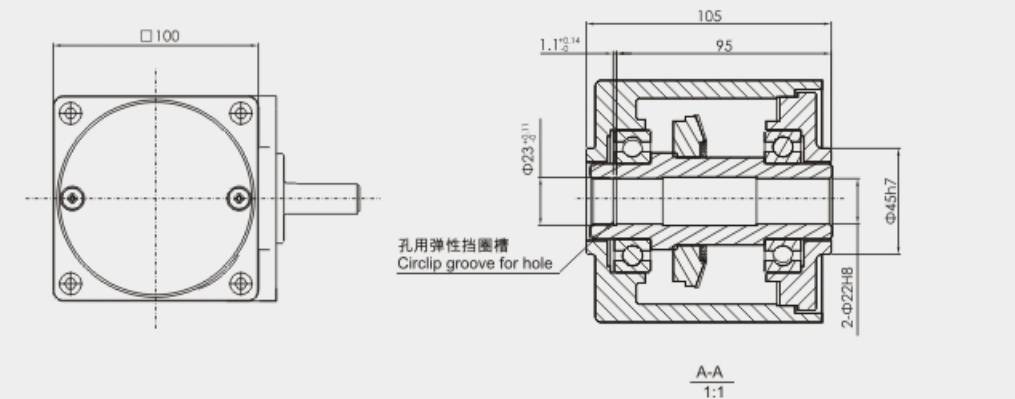
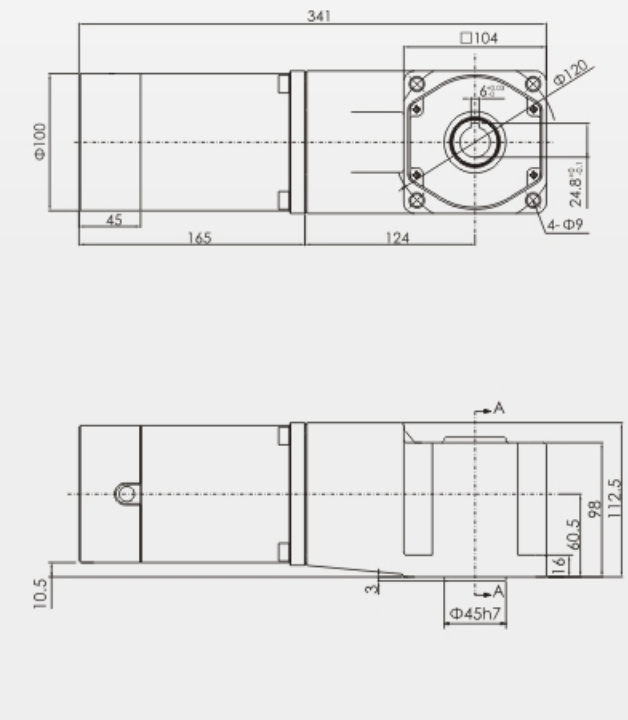
组合：电机+直角中实减速箱 (减速比：1:3~200)

Portfolio: motor + right-angle solid gearbox
Reduction ratio: 1:3~200



组合：电机+直角中空减速箱 (减速比：1:3~200)

Portfolio: motor + right angle hollow gearbox
Reduction ratio: 1:3~200

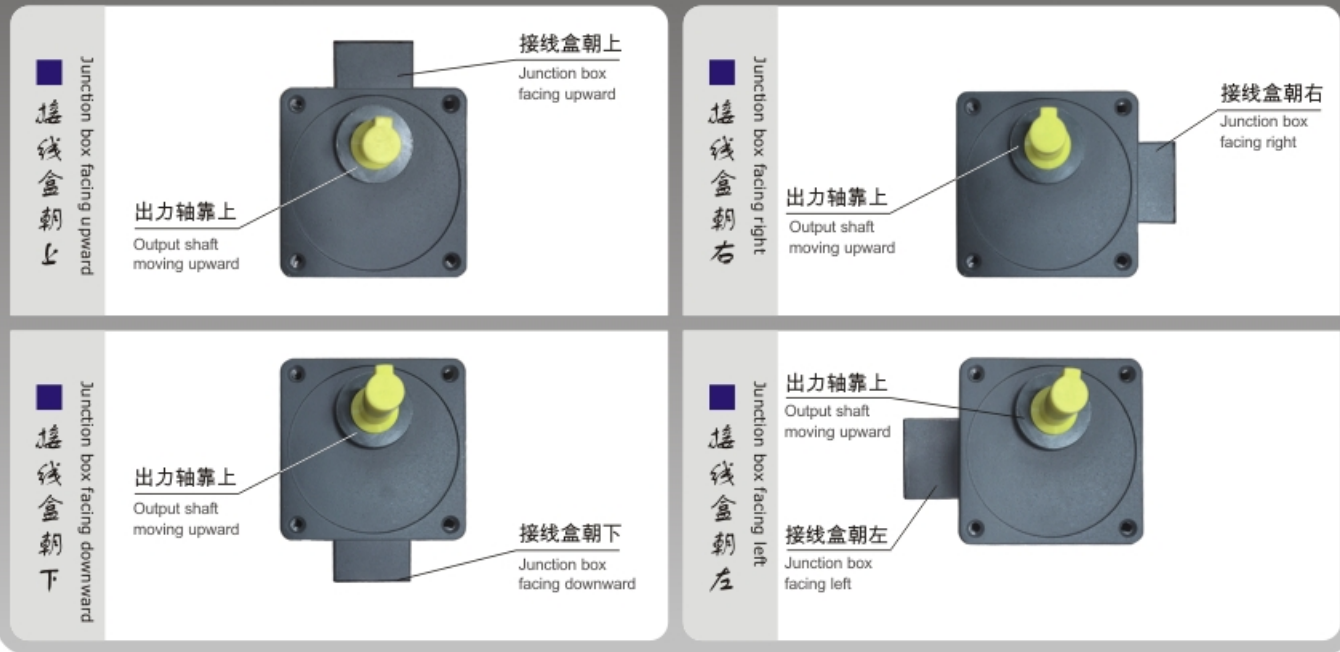


带接线盒减速电机选购指南

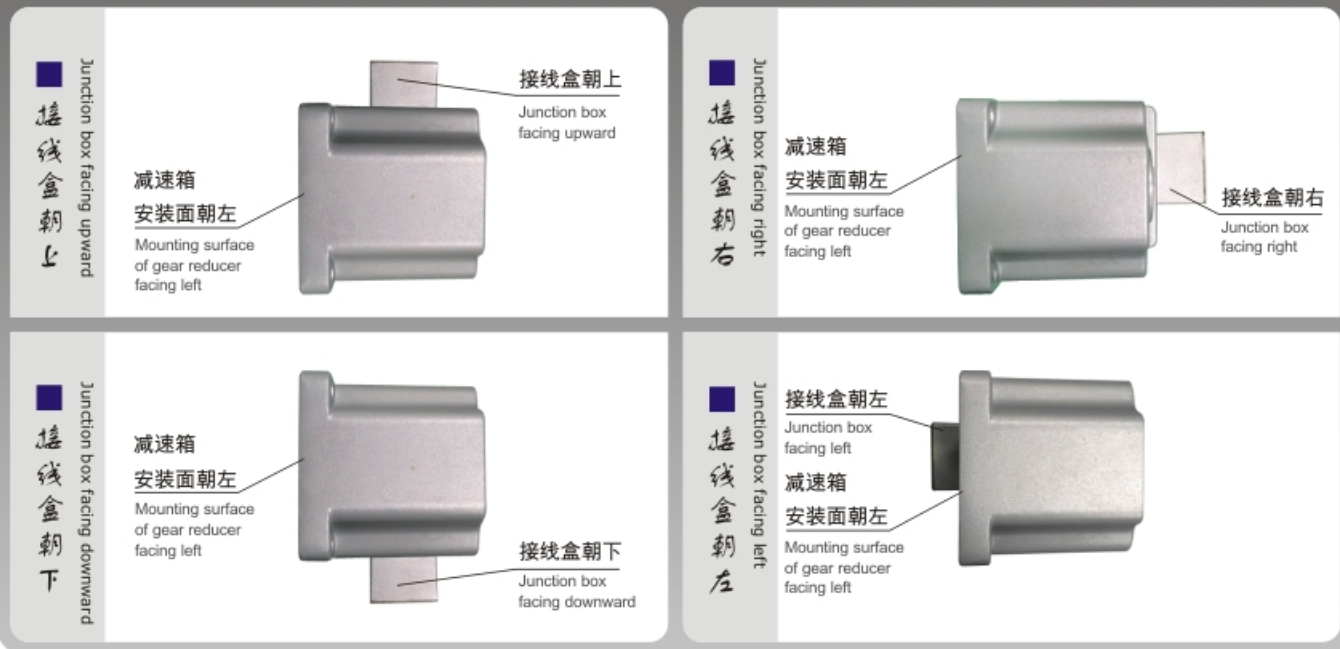
TERMINAL BOX DIRECTION

- 1、万鑫标配产品不带接线盒，如需订带接线盒的减速电机，需特别说明，且参考附图注明接线盒方向；
- 2、万鑫可根据客户需求将接线盒上、下、左、右4个方向调整，如客户无特殊要求，则出厂的接线盒方向统一朝上，具体如下：
- 1、The Wanshin standard product has no junction box, if you want to order the gear reducer motor with junction box, a special interpretation and a diagram for junction box direction shall be attached.
- 2、Wanshin can adjust the junction box in four directions of upward, downward, leftward and rightward according to customer's requirement. If the

普通减速箱接线盒方向 The direction of the junction box of the normal gear reducer



直角减速箱接线盒方向 Direction of the rectangle gear reducer junction box



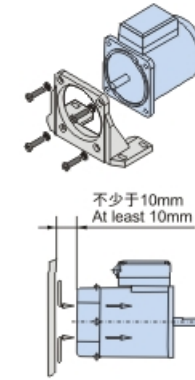
技术应用 (说明及安装)

TECHNICAL APPLICATION (Description and installation)

电机 MOTOR

1 特点 Features

电机作为本产品系列相对独立的一部分，共有六个品种，十个系列供用户选择。按品种分：标准电机、阻尼电机、调速电机、电磁制动电机、调速电磁制动电机、直流电机。按功率分：6W、15W、25W、40W、60W、90W、120W、140W、200W、250W。按使用电压分：单相110V/220V、三相220V/380V。该电机可配独立的接线端子盒，以便电气连接。由于该产品系列为精密小型动力机械，外观精巧、尺寸精准。在装配使用中严禁过度敲击以防造成内部结构损坏，同时在选型过程



As a relatively independent part of this product series, the motor has six varieties and ten series for your option: by varieties: standard, damping, variable speed, electromagnetic brake, variable speed electromagnetic brake and DC motors; by power: 6W, 15W, 25W, 40W, 60W, 90W, 120W, 140W, 200W, and 250W; by operating voltage: single phase 110V/220V, and three phase 220V/380V. The motor can match the terminal box of independence for easy electrical connection. Since the product line is precision small power machine and has sophisticated appearance and accurate size, it is strictly prohibited to impact excessively in the assembly to avoid causing damage to the internal structure; in the

标准减速箱与电机的组合 Combination of standard gearbox and motor

1 特点 Features

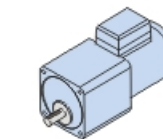
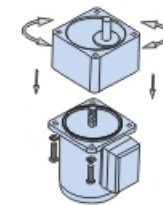
电机通过端面定位环与标准减速箱精密定位，可提供标准减速比1/3~1/200组合形式；在这系列减速比换算的前提下，若在选择不同功能的电机，即可实现变化更为丰

The motor positions accurately through end face retaining ring and standard gearbox, and can provide standard reduction ratio of 1/3~1/200; when this series of reduction ratio change, you can select motors of different functions to achieve practical combinations with richer changes. For example: variable speed, electromagnetic

2 安装 Installation

标准减速箱、电机，同为精密机械。在设计选型后的安

Standard gearbox and motor are precision machinery. During installation after design and selection, it is one



带中间减速箱
With intermediate gearbox

2 安装 Installation

对于输出轴为圆轴的独立电机，其轴端零件安装联接孔尺寸公差因型号不同分别为6H7、8H7、10H7、12H7。转配中除因设计结构外，推荐使用相对应规格的弹性联轴器。在端面安装有困难的场合，推荐使用相对应规格的直角安装脚，另外，对有冷却风扇的电机在安装时注意

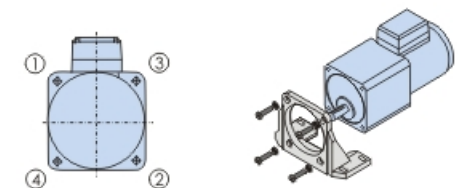
For an independent motor with circular output bearing, the tolerance of connecting hole size for bearing component installation are 6H7, 8H7, 10H7 and 12H7 respectively depending on the models. Except for the reason of design structure, it is recommended to use flexible coupler of corresponding specifications for assembly. If it is difficult to install the end face, it is recommended to use right-angle mounting feet of corresponding specifications. In addition, do not to clog the suction opening in the rear side for the motors with

3 电机与标准减速箱的连接

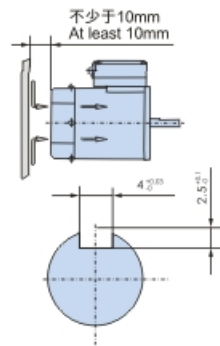
Connection of the motor and standard gearbox

作为精密机械的装配，与减速箱配套的电机，在其连接端面均有凸缘止口。而减速箱的连接端面有与之配合的沉台止口。用户可根据自己的实际情况调整减速箱与电机的装配相位，也就是说，可按图示任意旋转电机或减速箱。调速到理想位置后，在紧固电机法兰上的四个螺

For the assembly of precision machinery, the motor used together with the gearbox has flange spigot in its connecting end. The connecting end of gearbox has a mating spigot. The user can adjust the assembly position of the gearbox and motor according to the actual situation, that is, the motor and gearbox can be rotated freely as shown. Adjust to the desired position, and then secure the four screws on the motor flange. Note the order of



与直角安装脚组合
Combination with right-angle mounting feet



安装预留空间
Reserved space for installation

4 与设备的连接 Connection with the equipment

减速箱输出轴端的连接面为平面，其上的连接孔为螺纹孔，该面是经过精加工的平面，可与设备已加工的连接面直接连接。注意在紧定时仍应按对角依次逐渐紧固的方式。或设备连接受限，或设计结构差异，推荐使用专门配置的直角安装脚进行安装，这样更便于可靠连接，方便调速，同时也有与此配套的高精度弹性联轴器可供选择。

同样，对有冷却风扇的电机在安装时注意不要堵塞电机后部的吸风口，建议留出不少于10mm的空间。

本产品系列的电机、减速箱、中间减速箱均为精密传动部件，在与负载连接时应格外注意，严禁猛烈敲击、扳扭。为

The connecting surface of gearbox output bearing is flat, and the connecting holes on the surface are threaded. The surface is fine finished and can be directly connected to the processed connecting surface of the equipment. Note that it also should be tightened diagonally in turn. If limited by equipment connection or design structure difference, it is recommended to install with specially configured right angle mounting feet, which is more reliable and easy to connect, easy to regulate speed, and high precision flexible couplers are available.

Similarly, do not to clog the suction opening in the rear side for the motors with cooling fans. It is recommended to leave a space not less than 10mm.

The motor, gearbox and intermediate gearbox of this product series are close transmission components, and it is

直角减速箱与电机的组合 Combination of right-angle gearbox and motor

1 特点 Features

与传统的标准减速箱（或称平行轴减速箱）不同，为了给设计者提供更大的选择空间，使设备整体更加紧凑，本公司还提供了直角减速箱的传动形式。直角减速箱除具有标准减速箱的所有功能外，也就是宽范围的速比选择性（ $i=3-600$ ），优异的传递性能，还具有高强度的壳体，以及紧凑的安装形式，这是标准减速箱所不有的。

同样，在前述条件下，通过选择不同功能的电机，能实现不同的功能组合。

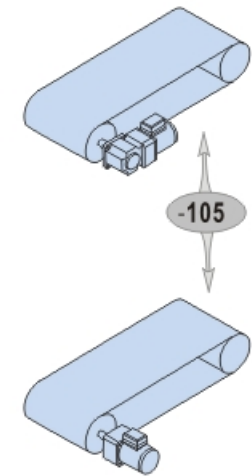
Different from traditional standard gearboxes (or parallel shaft gearboxes), in order to give designers greater choice and make the equipment more compact, we also offer right angle gearboxes. In addition to all the features of standard gearboxes, i.e. wide range of speed ratio selectivity ($i=3-600$) and excellent transfer properties, the right-angle gearboxes also have high strength casing and compact installation, which the standard gearboxes do not have.

Similarly, under the aforementioned conditions, you can achieve different combinations of features by selecting motors of different functions.

4 与设备的连接 Connection with the equipment

直角减速箱输出轴的端面为精加工平面，其上四角分布地四个通孔，可与设备已加工的连接面直接贴合连接，在直角减速箱的输出方式分为中空轴与中空轴两种形式工，用户可根据负载的形式选择，紧固螺栓时，同样应

The end surface of right angle gearbox output bearing is finished plane. The four through holes distributed in the four corners can fit the processed connection surface of the equipment directly. The output of right angle gearbox includes solid axis and hollow axis forms. The user can select according to the load form. The bolts



安装空间比较
Comparison of installation space

2 安装 Installation

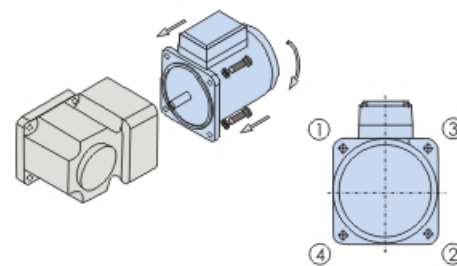
直角减速箱、中间减速箱和电机属精密机械。在设计选

Right angle gearbox, intermediate gearbox and motor are precision machinery. The assembly quality after design and selection will directly affect the service life

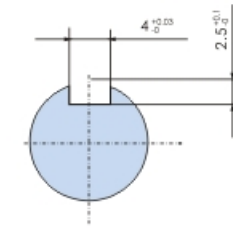
3 电机与直角减速箱的连接 Connection of the motor and the right angle gearbox

作为精密机的装配，与直角减速箱配套的电机除有独立的连线端子盒外，在其连接端面均有凸缘止口。而直角减速箱输入端面有与之配合的沉孔台止口。用户可根据实际情况，适当地旋转电机与直角减速箱的相对旋向。调整到位后，在坚定电机到连接法兰上的四个螺钉。

For the assembly of precision machinery, in addition to independent connection terminal box, the motor used together with the right angle gearbox has flange spigot in its connecting end. The connecting end of the right angle gearbox has a mating spigot. The user can rotate the relative rotation of the motor and the right angle gearbox appropriately according to the actual situation. Adjust to the desired position, and then secure the four screws on the motor flange.



5 直角减速箱中空轴输出的连接 Connection with solid axis output of right angle gearbox



直角减速箱中空轴输出为键槽结构形式，对应不同规格，与其输出轴装配孔的尺寸分别为：12H7，15H7，20H7三种。在与负载的连接中，严禁猛烈敲击、扳扭，在确保装配质量的前提下，该产品在设计生产中也兼顾

The solid axis output of right angle gearbox is in keyway structure. Corresponding to different specifications, the sizes of the output bearing mounting holes are 12H7, 15H7 and 20H7 respectively. In connection with the load, do not knock or twist violently. Under the premise of ensuring the assembly quality, other assembly factors

7 电机、减速箱的装配注意事项 Precautions for motor and gearbox assembly

电机、减速箱以及中间减速箱同为精密机械。在实际应用中，因装配不当而造成损失或报废的情况尤为突出，

Motor, gearbox and intermediate gearbox are precision machinery. In practice, damage and scrapping are often caused by improper assembly, so that the assembly is

•轴、键公差 Shaft and key tolerance

为便于装配，同时保证可靠的连接，以及转矩传递。产品对所涉及到的键槽公差在现有的规格中，均有一般通用设备略大（具体公差详见样本），输出轴公差为

To facilitate the assembly and ensure reliable connection and torque transmission, the related keyway tolerances are generally slightly larger than generic devices (see sample for specific tolerance), the tolerance of output

•敲击问题 Percussion problem

装配中严禁对负载轴、套进行压力装配，这将容易导致电机或减速箱中轴承或齿轮的损坏，也会三十齿轮的齿印痕。同时也要避免猛烈敲击，以及扳扭。严格控制负载轴、套的尺寸公差，必要时可用软质材料衬垫，

It is prohibited to transfer the pressure of load axis and sleeve in the assembly process, or else it will easily lead to damage to the bearings or gears in the motor or gearbox and ratcheting prints on the gear teeth. Also avoid violent knock and twist. Control the dimensional tolerance of the load axis and sleeve strictly; if

•同心度问题 Concentricity problem

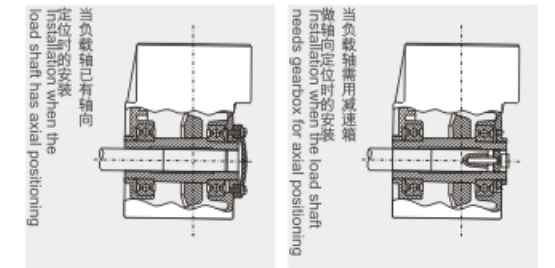
由于输出均为回转形式，在调速，重载工况下，同心度尤为重要。推荐选用本公司配套生产的弹性联轴器，它不仅回转惯量小，结构紧凑，而且具备同心度补偿和传

Since the output is in rotating form, concentricity is particularly important in variable speed and heavy-duty condition. It is recommended to use the flexible couplers of our company, which not only have small rotary inertia and compact structure, but also

6 直角减速箱中空轴输出的连接 Connection with hollow axis output of right angle gearbox

在中空系列的直角减速箱装配中，同样注意严禁猛烈敲击、扳扭。与中空轴连接的轴尺寸差为h8，分别有：15h8，17h8，22h8三种。为使与负载连接时有可靠合理的轴向定位，在直角减速箱中空系列中还设置了轴向固定结

In the assembly of hollow series right angle gearboxes, it is also prohibited to knock or twist violently. The dimensional tolerance of the axis connected to the hollow axis is h8, including 15h8, 17h8 and 22h8. To ensure reasonable and reliable axial positioning in load connection, the hollow series right angle gearboxes also integrate axially fixed structure. The recommended



•特别注意 Special Note

- 1、用直角中空减速箱做轴向定位时，不允许负载轴有过定位的现象，否则将易损坏减速箱。
- 2、直角中空减速箱配轴长度技术要求：
 - 若此轴是完全利用中空轴支撑固定，则轴长应与中空轴等长或略短一点。
 - 若无支撑作用，仅传递转矩，则轴只需插入中空轴

- 1、For axial positioning with the right angle hollow gearbox, over-positioning isn't allowed for the load axis, or else it will easily damage the gearbox.
- 2、Technical requirements on axis length of rightangle hollow gearbox:
 - If this axis is fully supported and fixed by hollow axis, the axial length should be equal to or slightly shorter than the hollow axis.
 - If there is no supporting effect and only the torque

•轴向固定步骤 Steps of axial fixation

- 1、取下直角减速箱中空轴另一侧的防尘盖；
 - 2、如图所示，对不同结构的负载轴按图示方法固定；
 - 3、安装后部防尘盖（注意：螺栓高度不得超过后端盖面2mm）；
 - 4、若无法安装防尘盖，则必须用M4x5螺钉将原防尘盖螺钉孔堵住，否则会漏油，同时螺钉勿超长，否则
- 1、Remove the dust cover on the other side of the hollow axis of the right angle gearbox;
 - 2、As shown in the figure, fix the load axis of different structures in the method shown;
 - 3、Install the rear dust cover (Note: Bolt height shall not exceed 2mm of the rear cap);
 - 4、If the dust cover can't be installed, you must block the screw holes of the dust cover with M4x5 screws,