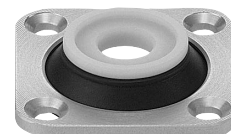


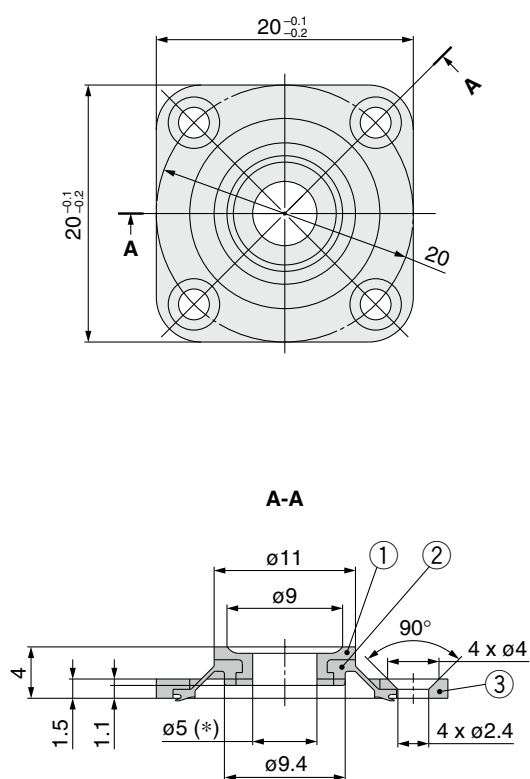
Vacuum Pad for Panel Holding

- For adsorbing and holding the stage of LCD panels, etc.
- The bellows mechanism allows for complete contact with curved work surfaces.



Dimensions

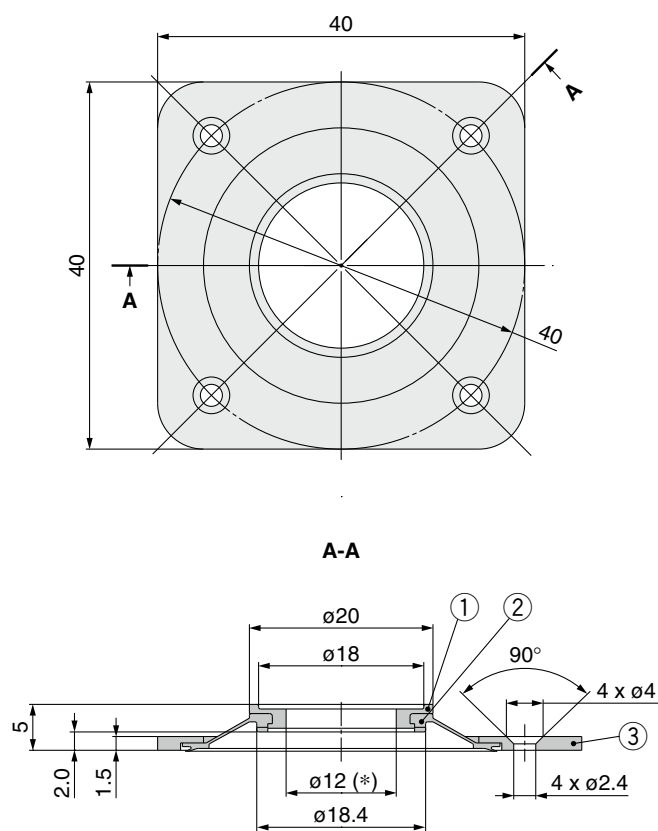
ZP2-Z002



Component Parts

No.	Part no.	Description	Material	Note
1	ZP2-Z2A	Pad	PTFE	—
2	ZP2-Z2B	Joint	FKM	—
3	ZP2-Z2C	Mounting plate	Aluminum alloy	Clear anodized

ZP2-Z003



Component Parts

No.	Part no.	Description	Material	Note
1	ZP2-Z3A	Pad	PTFE	—
2	ZP2-Z3B	Joint	FKM	—
3	ZP2-Z3C	Mounting plate	Aluminum alloy	Clear anodized

Take the following points into consideration when using this product.

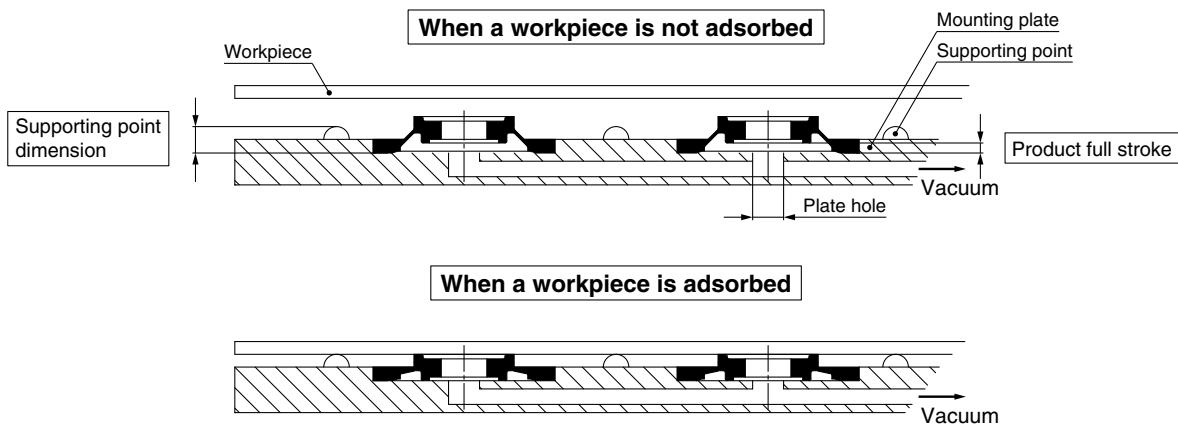
Customers are required to conduct the evaluation to judge whether or not the product is used.

- 1) This product should be used in the horizontal direction and to fix the workpiece.
- 2) The pad (resin) may have a more vacuum pressure leakage from the lip compared to general rubber pads. Therefore, maintain as large a flow rate as possible to minimize the pressure drop due to leakage.
- 3) Cannot be used for vacuum retention
- 4) Design the pad mounting parts while referring to the "Table 1: References for Designing Mounting Parts" shown below. Additionally, avoid applying the weight of the workpiece directly to the pad.
- 5) Be sure to clean the workpiece contact part of the pad before use and during periodic maintenance.

Table 1: References for Designing Mounting Parts

	Supporting point dimension	Plate hole	(Reference value) Product full stroke
ZP2-Z002	2.9 ± 0.1 mm	$\phi 5$ or less	1.1 mm
ZP2-Z003	3.0 ± 0.1 mm	$\phi 12$ or less	2.0 mm

* Use this product with its full stroke. Avoid using the product with a stroke less than the product stroke (at an intermediate position) or with a stroke exceeding the product stroke.



Model Selection

For Special Applications

Mark-free

For Film Adsorption

Multistage

Flat

Nozzle

Sponge

For Disk Adsorption

For Panel Holding

Ball Spline Buffer

Construction

Mounting Bracket Assembly

Precautions