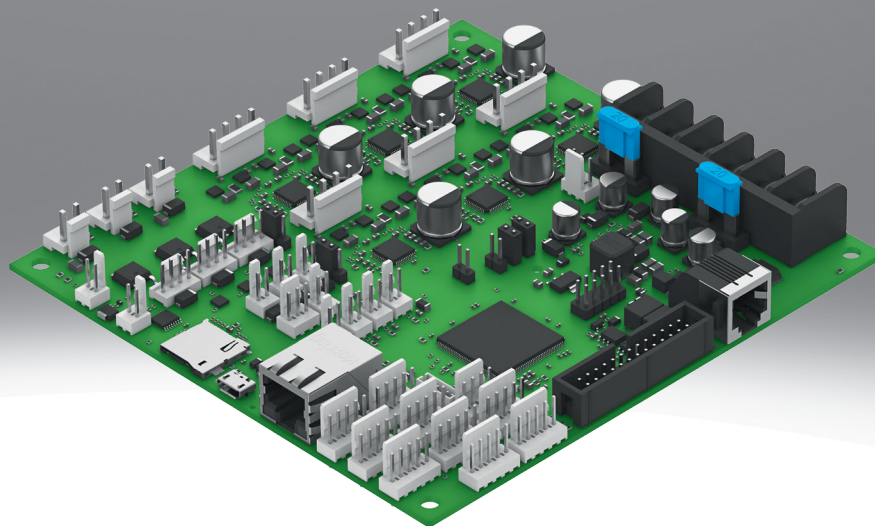


# Servo drive CMXL\_ST6

**FESTO**



## Characteristics

### At a glance

The servo drive CMXL is a 6-axis low voltage servo drive for controlling stepper motors.

- 6 channels for stepper motors up to 4.5 A
- Open loop, no encoder inputs
- Digital inputs for connecting the micro-switches on the three-dimensional gantry EXCL for homing the axes
- Digital Ethernet interface, USB
- Positioning via G-code commands (onboard native G-code interpreter)
- Interpolated operation via multiple channels enables synchronous movement of the axes
- Parameterisation, programming and commissioning in a clear and user-friendly interface possible (Festo Automation Suite)

## Type code

001	Series
CMXL	Servo drive

002	Motor type
ST	Stepper motor ST

003	Number of axes
6	6

004	Nominal current
C4	4 A

005	Nominal input voltage
1	24 V DC

006	Bus protocol/activation
MP	Multiprotocol

## Datasheet

**General technical data**

Supported kinematic	3-axis gantries X-Y-Z
Status displays	LED (status)
Controller operating mode	Homing, Open-loop operation
Control methods	TCP/IP
storage medium	microSD
Bus connection	Socket
USB-interface	USB 2.0
Baud rate	10/100 Mbps
Number of digital logic outputs 24 V DC	19
Number of digital logic inputs	9
Features of digital logic out- puts	Configurable, Not galvanically isolated

**Electrical data**

Operational voltage range DC	20.4 ... 30 V
Nominal operating voltage DC	24 V
Permissible range for load power supply	± 10%
Current rating per output	4,450 mA
Nominal voltage for logic pow- er supply DC	24 V
Permissible range for logic voltage	± 10%

**Operating and environmental conditions**

Ambient temperature	10 ... 40°C
Storage temperature	-20 ... 60°C
Degree of protection	IP00
Corrosion resistance class CRC	0 - No corrosion stress
Product weight	155
Note on materials	RoHS-compliant
LABS (PWIS) conformity	VDMA24364 zone III

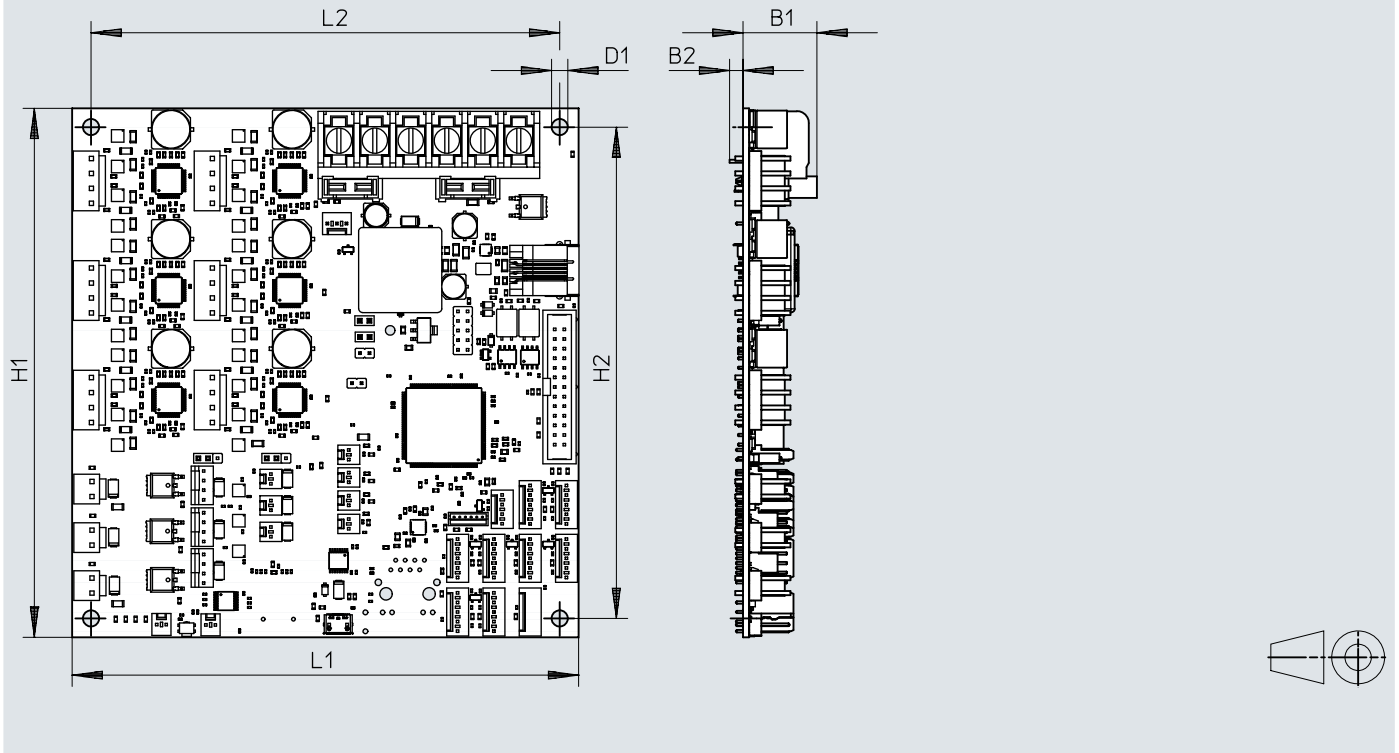
**Bus protocol**

Fieldbus link	Ethernet
Process interfacing	Drives with positioning function
Ethernet, supported protocols	TCP/IP
Ethernet interface	RJ45 (socket, 8-pin)

# Dimensions

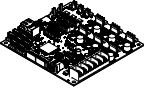
Dimensions – Servo drive CMXL

Download CAD data → [www.festo.com](http://www.festo.com)



	B1	B2	D1 Ø	H1	H2	L1	L2
CMXL-ST6-NE-C4-1-MP	19,6	3,5	4,3	140	130	134	124

## Ordering data

	Protocol	Part no.	Type
	HTTP, Ethernet, TCP/IP	<b>8168593</b>	<b>CMXL-ST6-NE-C4-1-MP</b>