

Fluid control valve(2/2way)

2SA Series (Internally piloted and normally closed)



Specification

Model\Item	Port size [Note1]	Orifice size (Φmm)	Cv	Valid area or section (mm ²)	Weight [Note2](g)	Operating pressure differentia		Proof pressure	
						MPa	psi	MPa	psi
2SA150-15	1/2"	15.0	5.50	100.0	575	Max: 1.0 Min: 0.05	Max: 150 Min: 10	1.5	220
2SA200-20	3/4"	20.0	9.50	170.0	735				
2SA250-25	1"	25.0	12.50	220.0	1035				

[Note1] PT thread, G thread and NPT thread are available.

[Note2] The weight in the table is the terminal valve's weight,
Grommet valve's weight is 10g less than terminal's.

Symbol



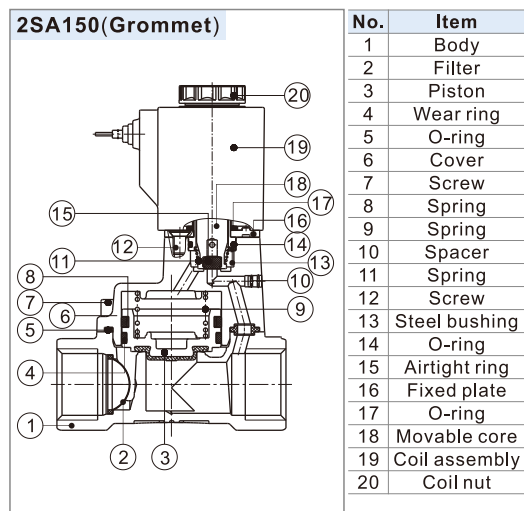
Product feature

1. Indirect acting (Internal pilot) and normally closed type 2/2 way fluid valve. Its can change direction quickly and has large flow.
2. It is compact, small and light weight. Easy to install and dismantle;
3. The valve body is made of SUS304. The coil has a Heat resistance classification of Class F. The standard seal material is FPM-F. Please contact us if other seal material are required.
4. The protection class of the coil is IP65 and there is a choice for grommet or terminal electrical entry.

Specification of coil

Valve type	Coil type	Power type	Frequency (Hz)	Voltage range	Electrical entry	Power Consumption (VA/W)	Insulation	Temp. rise(°C)
2SA150 2SA200 2SA250	CDA110 CLA110	AC	50	±15%	Terminal (CDA) Grommet (CLA)	10.0VA	Class F	35
			60			8.0VA		30
		DC	-	±10%	6.5W	30		

Inner structure



Valve's specification

Acting		Internally piloted			
Initial state		Normally closed			
Adaptable fluid		Air, Water, Oil			
Viscosity limit		Under 20CST			
Ambient and fluid temperature (°C)		Water	Air	Oil	Ambient
		Max. 80	90	80	70
		Min. 1	-20 [Note1]	-10 [Note2]	-20

[Note1] Dew point: -20(°C) or less ; [Note2] 50CST or less.

Ordering code

Ordering code of valves

2SA 150 15 A □ □					
① Model	② Orifice size	③ Port size	④ Voltage	⑤ Electrical entry	⑥ Thread type
2SA: 2/2 way internally piloted and normally closed	150: Φ15mm	15: 1/2"	A: AC220V B: DC24V C: AC110V E: AC24V F: DC12V	Blank: Terminal I: Grommet [Note]	Blank: PT G: G T: NPT
	200: Φ20mm	20: 3/4"			
	250: Φ25mm	25: 1"			

[Note] The wire length is 0.5m.

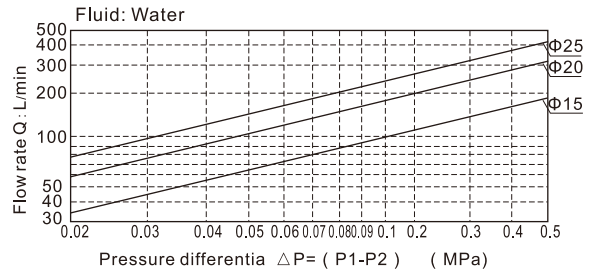
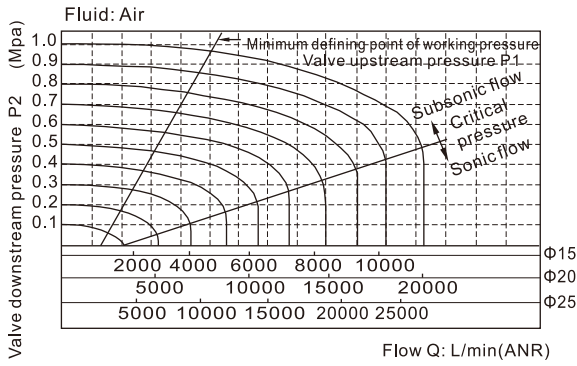
Ordering code of accessories

Ordering code of accessories is the same as 2WA series valve's, Please refer to P166 for details of ordering code.

Fluid control valve(2/2way)

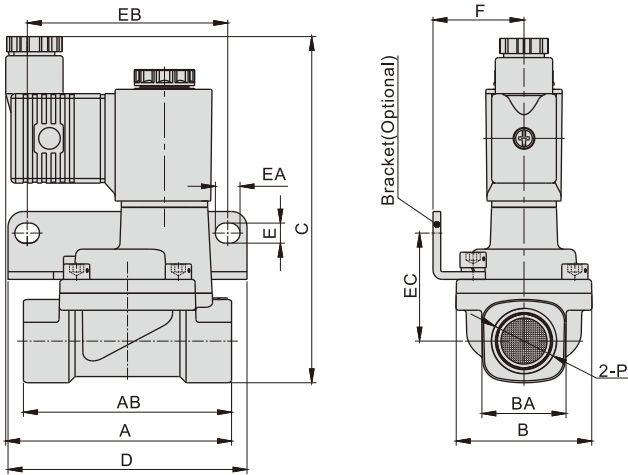
2SA Series (Internally piloted and normally closed)

Flow chart

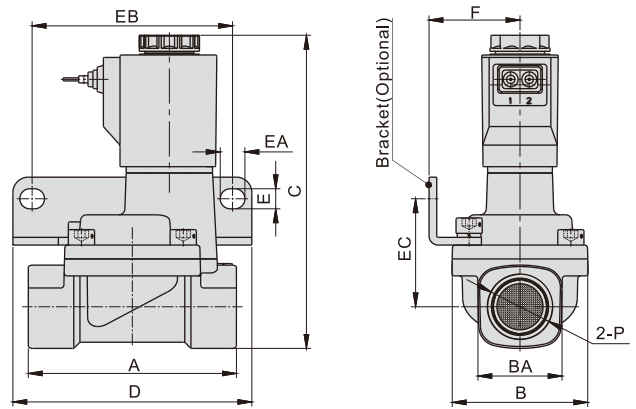


Dimensions

Terminal



Grommet



Model\Item	A	AB	B	BA	C	D	E	EA	EB	EC	F	P
2SA150-15	73.5	67.5	44	27.5	112	77.5	6.5	8	65	35	29.5	1/2"
2SA200-20	75.5	79.5	51	33.5	119	87.5	6.5	8	75	38	33	3/4"
2SA250-25	77.5	90	57	40.5	126	93	6.5	8	80	42	35	1"

Model\Item	A	B	BA	C	D	E	EA	EB	EC	F	P
2SA150-15	67.5	44	27.5	102	77.5	6.5	8	65	35	29.5	1/2"
2SA200-20	79.5	51	33.5	109	87.5	6.5	8	75	38	33	3/4"
2SA250-25	90	57	40.5	116	93	6.5	8	80	42	35	1"