

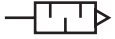
Silencer UC

FESTO



Characteristics

At a glance



To reduce noise and prevent contamination at the exhaust ports of pneumatic components.

- Polymer version
- For solenoid valves CPE
- Threaded connection or push-in sleeve for push-in fitting QS
- Operating medium: compressed air

Note: Clean silencers with paraffin (not with petrol or trichloroethylene).

Type code

001	Series
UC	Silencer
002	Pneumatic connection
M5	M5
M7	M7
1/8	G1/8
1/4	G1/4
3/8	G3/8
QS-4H	Push-in sleeve 4 mm
QS-6H	Push-in sleeve 6 mm
QS-10H	Push-in sleeve 10 mm
QS-3H	Push-in sleeve 3 mm
QS-8H	Push-in sleeve 8 mm

003	Packaging quantity [pieces]
	1
20	20
50	50

Datasheet

General technical data – Version with push-in sleeve

Pneumatic connection	QS-3	QS-4	QS-6	QS-8	QS-10
Mounting position	optional				
Sound pressure level ¹⁾	60 dB(A)				68 dB(A)
Flow rate to atmosphere ²⁾	170 l/min	350 l/min	800 l/min	1,500 l/min	3,100 l/min

1) Measured at 6 bar against atmosphere at 1 m distance

2) Measured at p1 = 6 bar

General technical data – Version with threaded connection

Pneumatic connection	M5	M7	G1/8	G1/4	G3/8
Mounting position	optional				
Sound pressure level ¹⁾	60 dB(A)	58 dB(A)	59 dB(A)	60 dB(A)	
Flow rate to atmosphere ²⁾	350 l/min	800 l/min	1,700 l/min	3,200 l/min	5,000 l/min

1) Measured at 6 bar against atmosphere at 1 m distance

2) Measured at p1 = 6 bar

Operating and environmental conditions

Operating pressure	0 ... 1 MPa
Operating pressure	0 ... 10 bar
Operating pressure	0 ... 145 psi
Operating medium	Compressed air to ISO 8573-1:2010 [7::-]
Note on operating and pilot medium	Lubricated operation possible
Ambient temperature	-10 ... 70°C

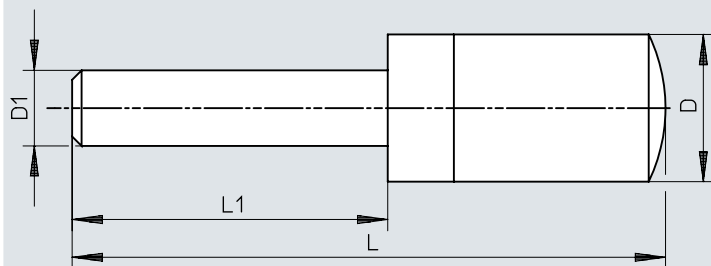
Materials

Material screwed plug	PE
Material shock absorber insert	PE
Note on materials	RoHS-compliant
LABS (PWIS) conformity ¹⁾	VDMA24364-B1/B2-L

1) UC...-20/-50: VDMA24364-B2-L

Dimensions

Dimensions – Design with push-in sleeve

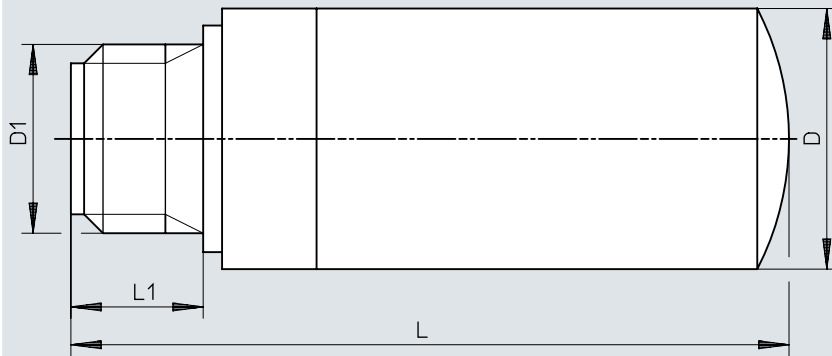
Download CAD data → www.festo.com

	D1 ∅	D ∅	L	L1
UC-QS-3H	3	7,8 +0,1/-0,3	29,1 ±0,6	14,4 ±0,2
UC-QS-4H	4	7,8 +0,1/-0,3	31,0 ±0,6	16,3 ±0,2
UC-QS-6H	6	9,8 -0,4	41,3 +1,4	17,2
UC-QS-8H	8	13,8 +0,2/-0,3	54,4 +0,5/-1,0	23,4
UC-QS-10H	10	17,8 -0,3	68,7 +0,2/-0,8	26,7

Dimensions

Dimensions – Version with threaded connection


Download CAD data → www.festo.com




	D1	D ∅	L	L1
UC-M5	M5	7,8 +0,1/-0,45	19,4 +0,6/-0,8	4,5 ±0,2
UC-M5-50				
UC-M7	M7	9,8 -0,5	30,7 +0,7/-0,9	5,5 +0,15/-0,1
UC-M7-50				
UC-1/8	G1/8	13,8 +0,2/-0,3	38,0 +0,8/-1,0	6,5 ±0,1
UC-1/8-50				
UC-1/4	G1/4	17,8 -0,3	50,8 +0,8/-1,0	8,5 ±0,15
UC-1/4-20				
UC-3/8	G3/8	22,1 -0,4	69,5 +0,6/-0,8	9,5 ±0,1
UC-3/8-20				

Ordering data

Ordering data – Version with push-in sleeve

	Pneumatic connection	Sound pressure level	Flow rate to atmosphere	Product weight	Part no.	Type
	QS-3	60 dB(A)	170 l/min	0.4 g	165005	UC-QS-3H
	QS-4		350 l/min	0.5 g	165006	UC-QS-4H
	QS-6		800 l/min	1.1 g	165007	UC-QS-6H
	QS-8		1,500 l/min	2.3 g	175611	UC-QS-8H
	QS-10	68 dB(A)	3,100 l/min	5.5 g	526475	UC-QS-10H

Ordering data – Version with threaded connection

	Pneumatic connection	Sound pressure level	Flow rate to atmosphere	Product weight	Part no.	Type
	M5	60 dB(A)	350 l/min	0.4 g	★ 165003	UC-M5
					534217	UC-M5-50
	M7	58 dB(A)	800 l/min	1.2 g	534218	UC-M7-50
					★ 161418	UC-M7
	G1/8	59 dB(A)	1,700 l/min	2.6 g	534219	UC-1/8-50
					★ 161419	UC-1/8
	G1/4	60 dB(A)	3,200 l/min	5.2 g	★ 165004	UC-1/4
					534220	UC-1/4-20
	G3/8		5,000 l/min	10.5 g	576759	UC-3/8-20
					1707427	UC-3/8